

ILLUSTRATIONS

ACKNOWLEDGEMENTS

Director of Archaeology and Museums, Mysore

Director of Information and Publicity, Bangalore

State Bank of India, Bangalore

City Co-operative Bank, Bangalore

Co-operative Training College, Bangalore

Canara Bank, Head Office, Bangalore

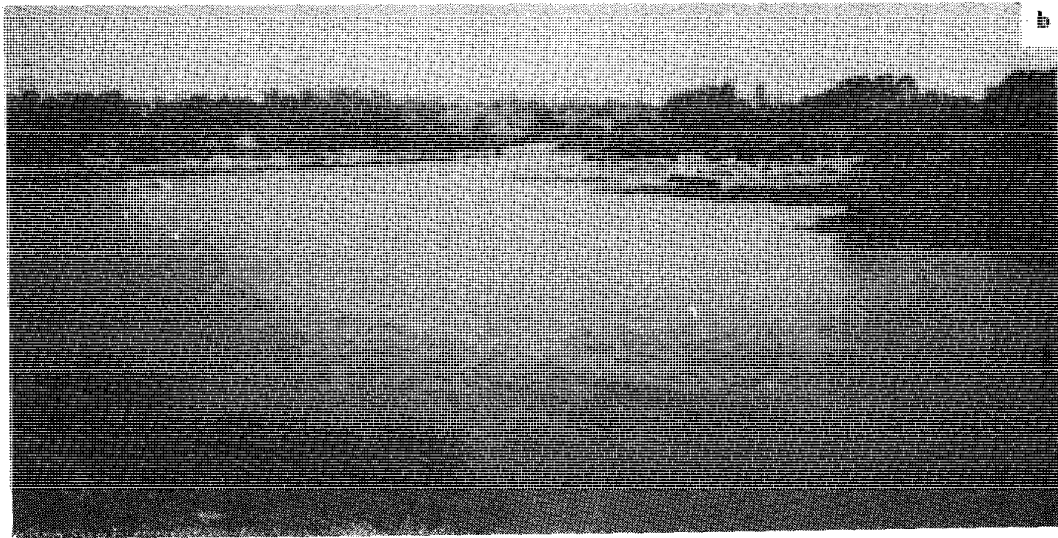
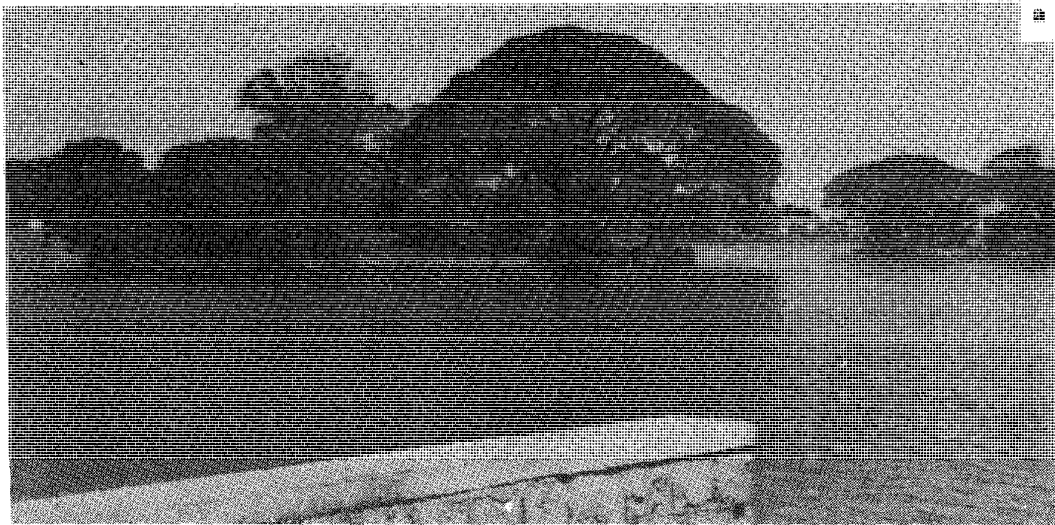
Martha's Hospital, Bangalore

Iyer, K.N.S

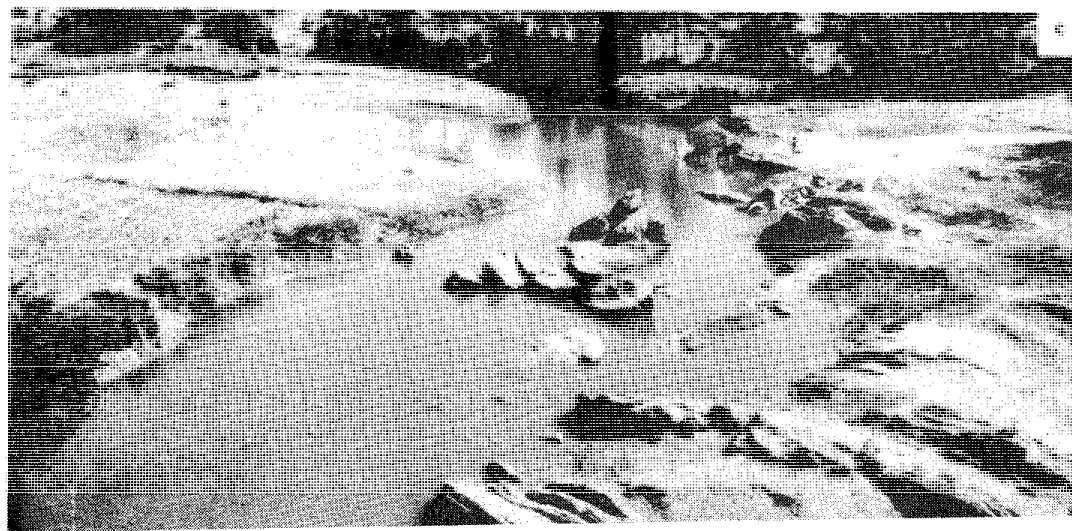
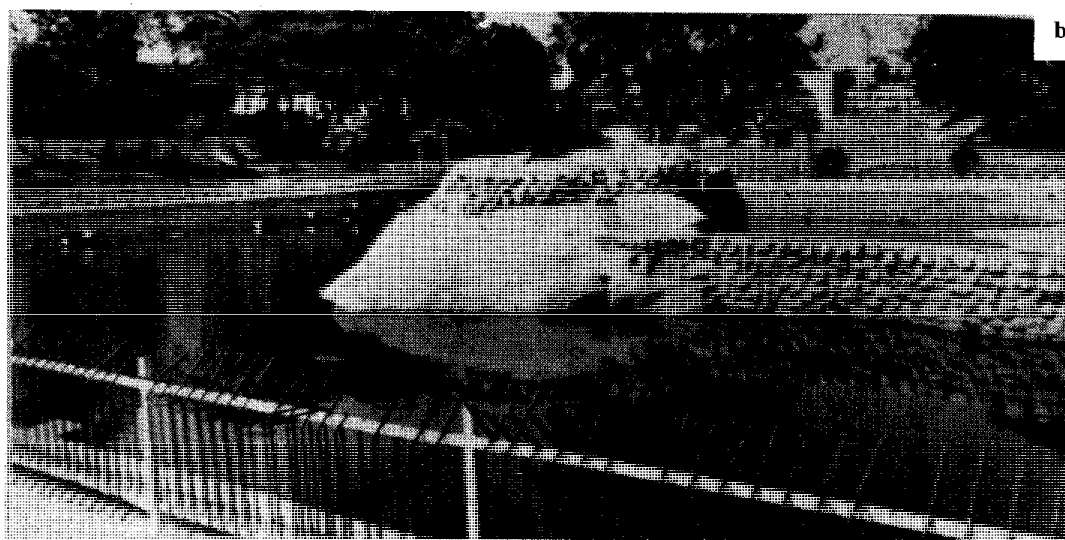
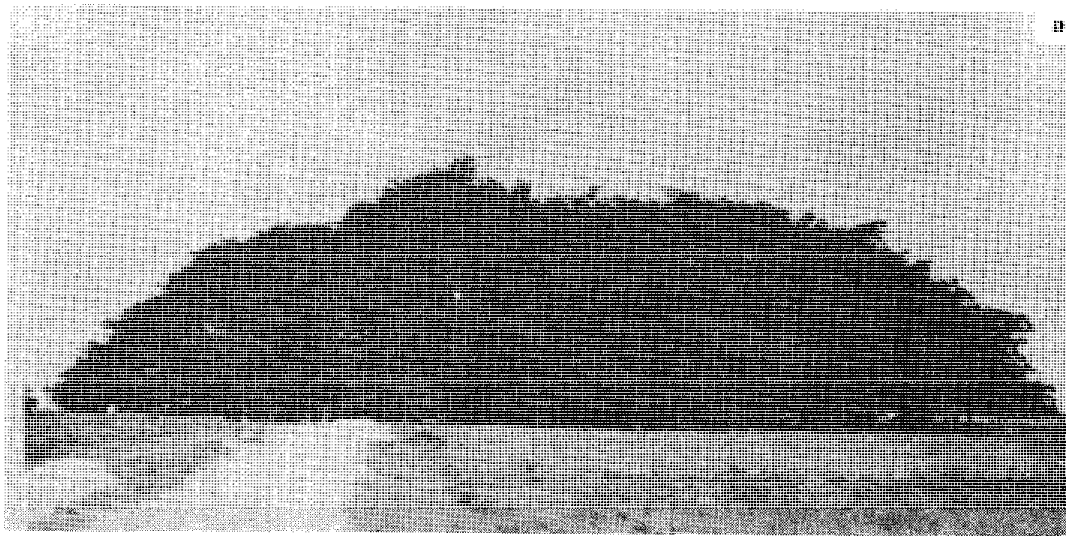
Chandrashekar, P.S.

Lakshminarasimhan, A.

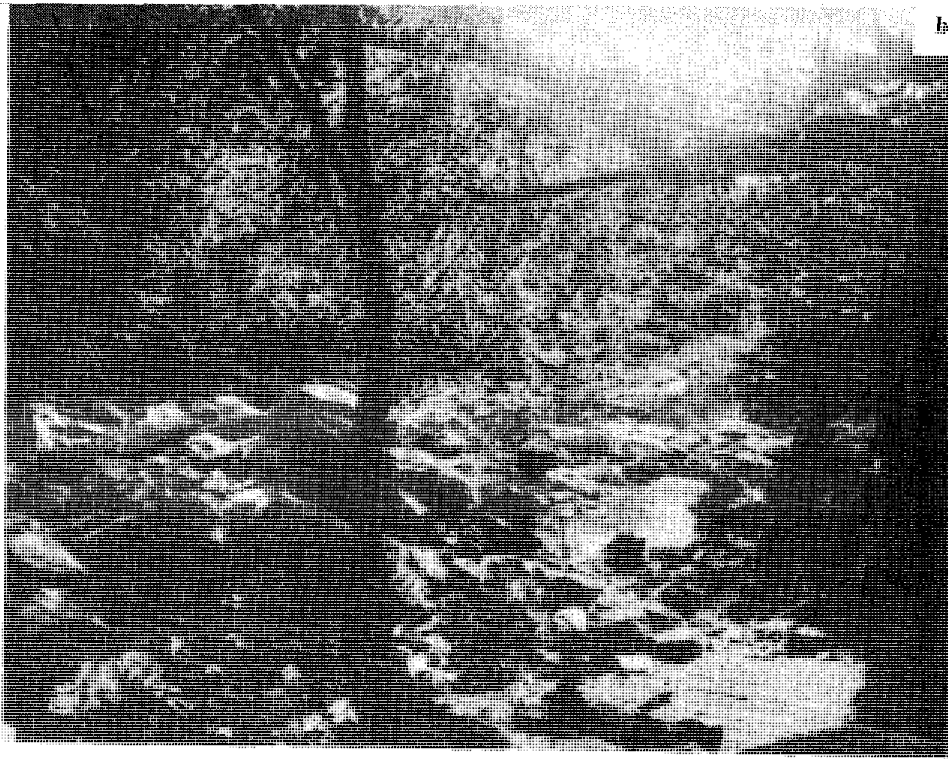
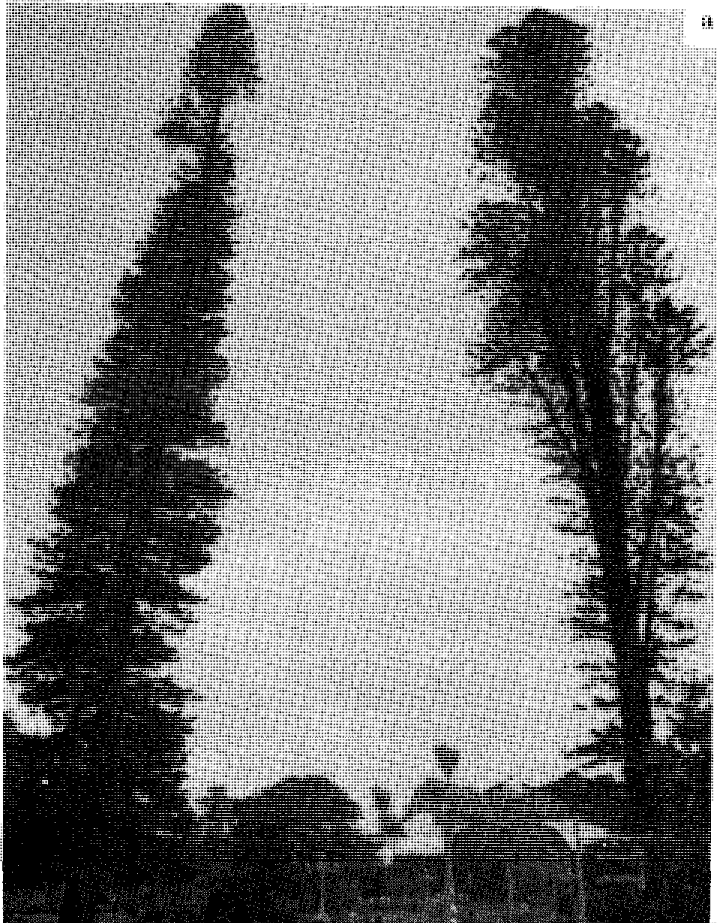
Devarakonda Reddy



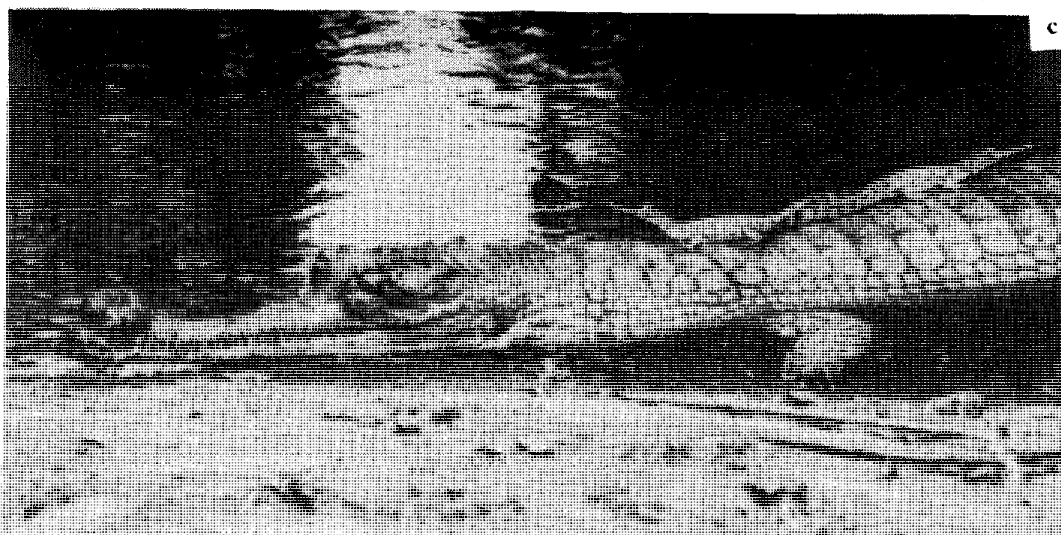
(a) The Ulsoor tank of the Kempegauda times with island parks. (b) The Sankey tank of the 19th century. (c) The Siddapur tank near Lalbagh.



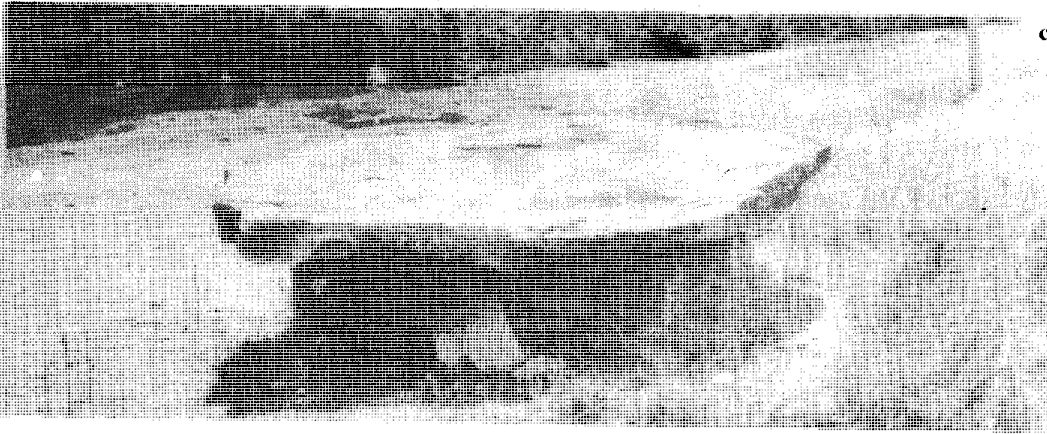
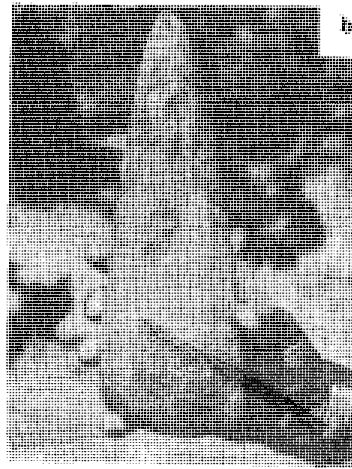
(a) The banyan tree covering three-acre area, Kethohalli (Ramohalli), (b) The small puddle of the Sampangi tank, where the Karaga rituals are held (Bangalore). (c) The South-Pinakini river near Mugalur.



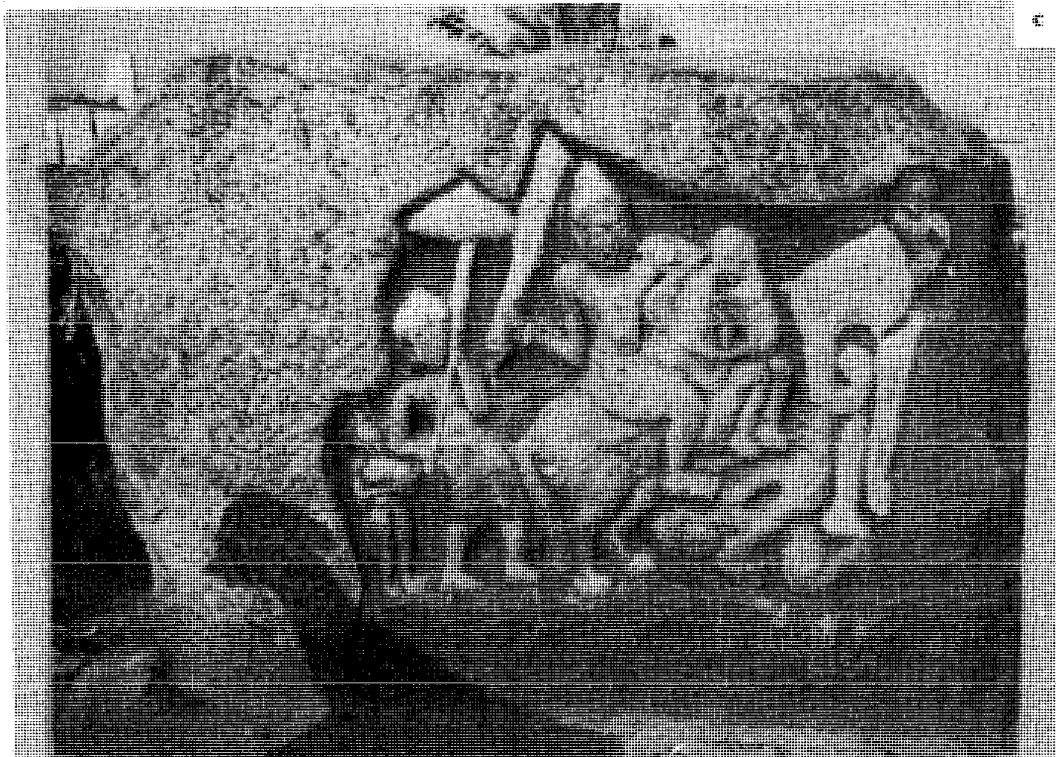
(a) The Lalbagh garden begun by Haider Ali. (b) The Muthyalamadu falls at its foot.



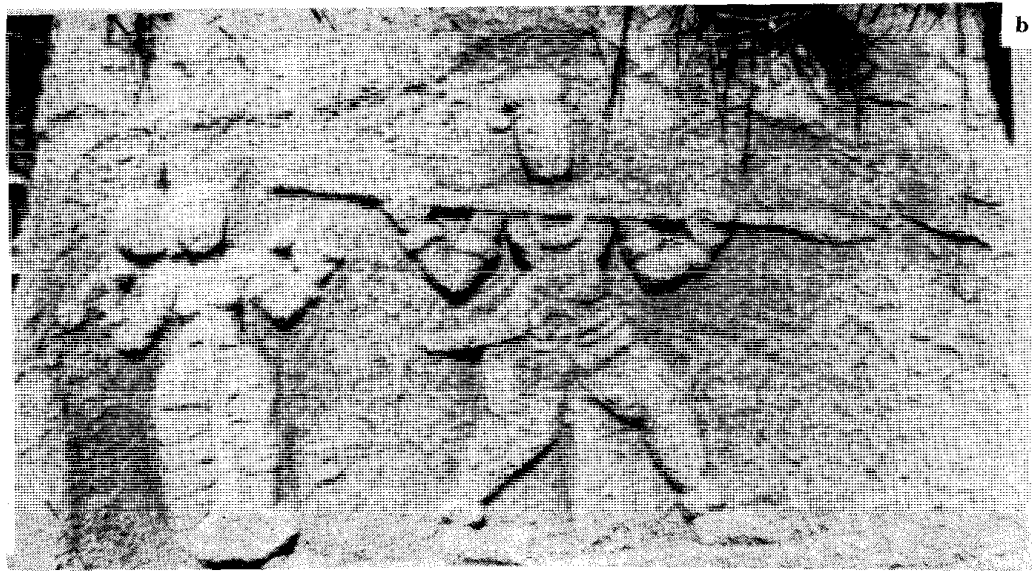
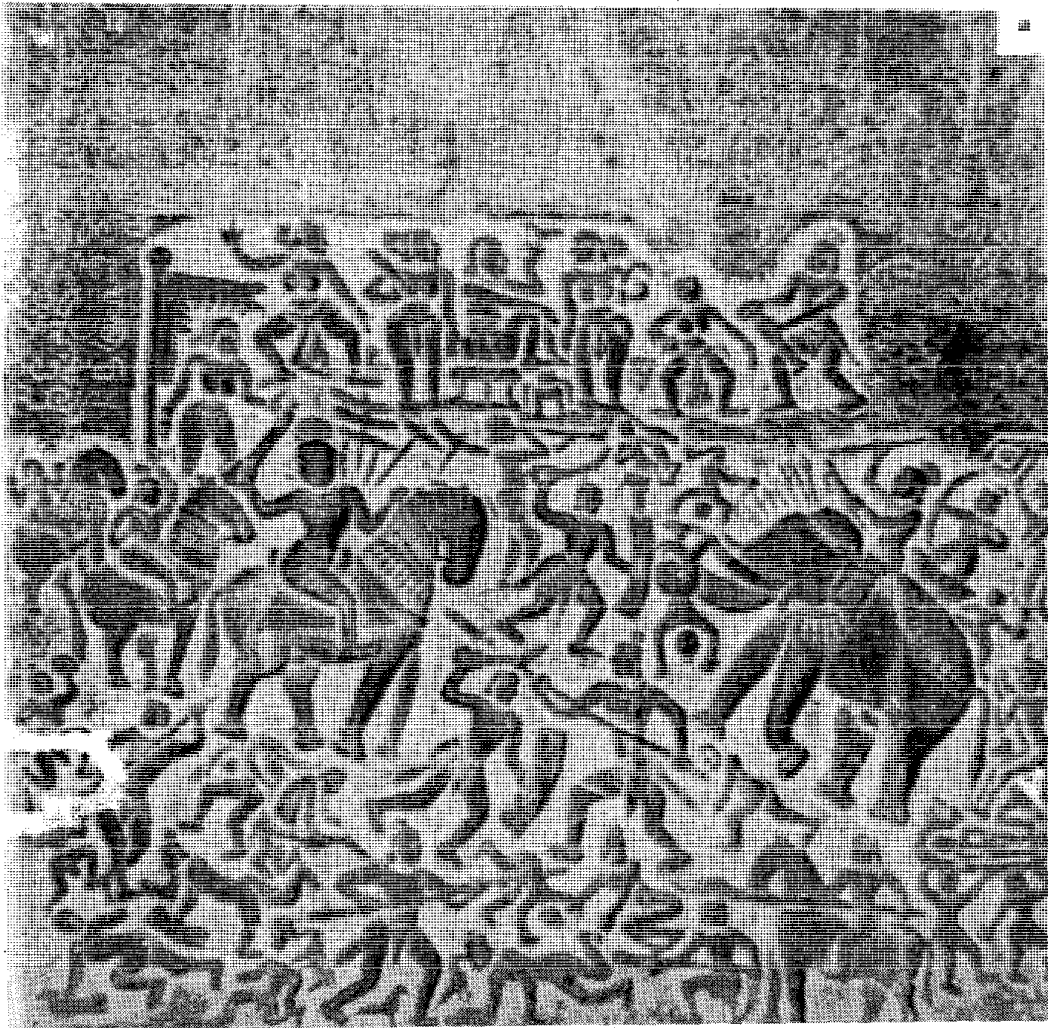
The Bannerughatta National Park and Safari: (a) Tiger at the park (b) Model of pre-historic animal. (c) Crocodile at the park.



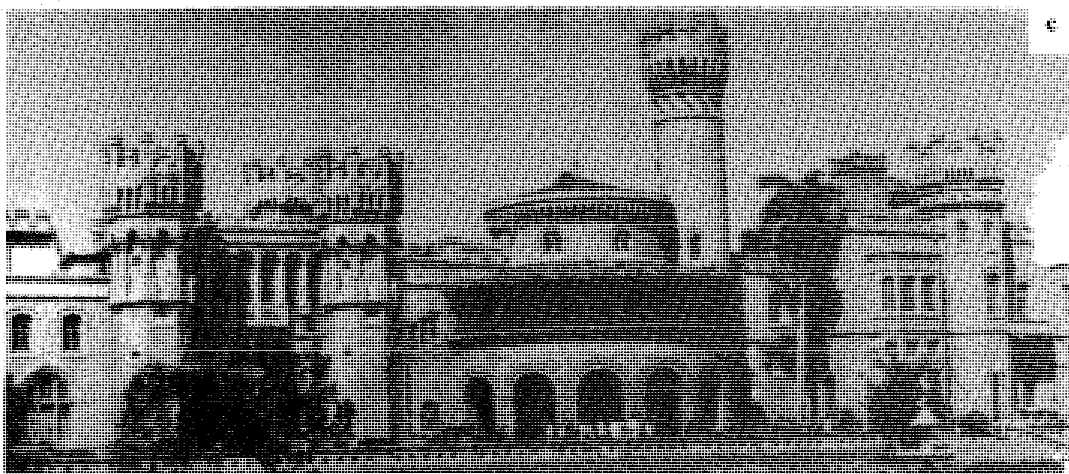
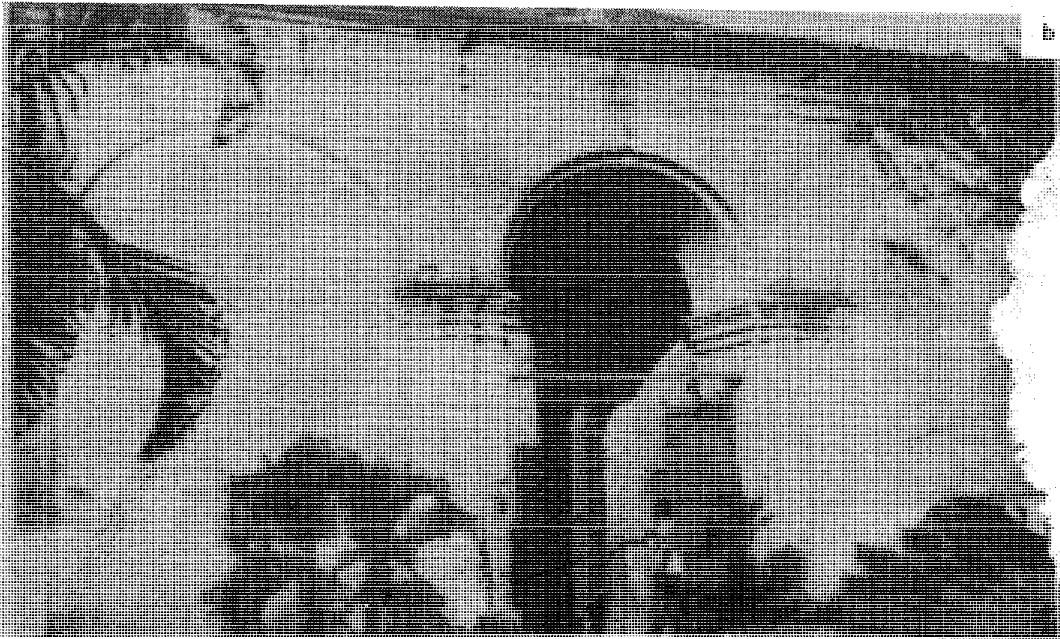
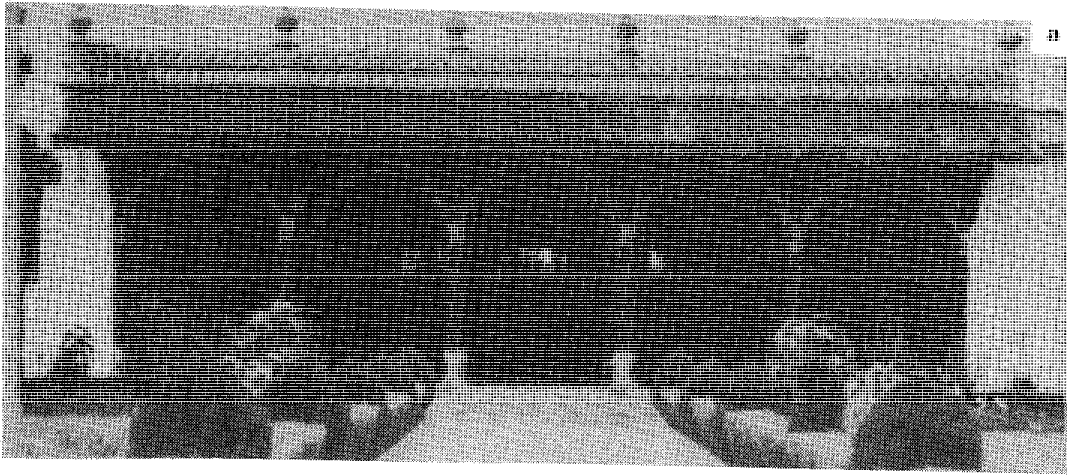
(a) Remains of megalithic tomb at Marasur. (b) Neolithic axe from Samandur (c) Passage Chamber tomb, near Bagalur. (d) Roman coins found in Bangalore.



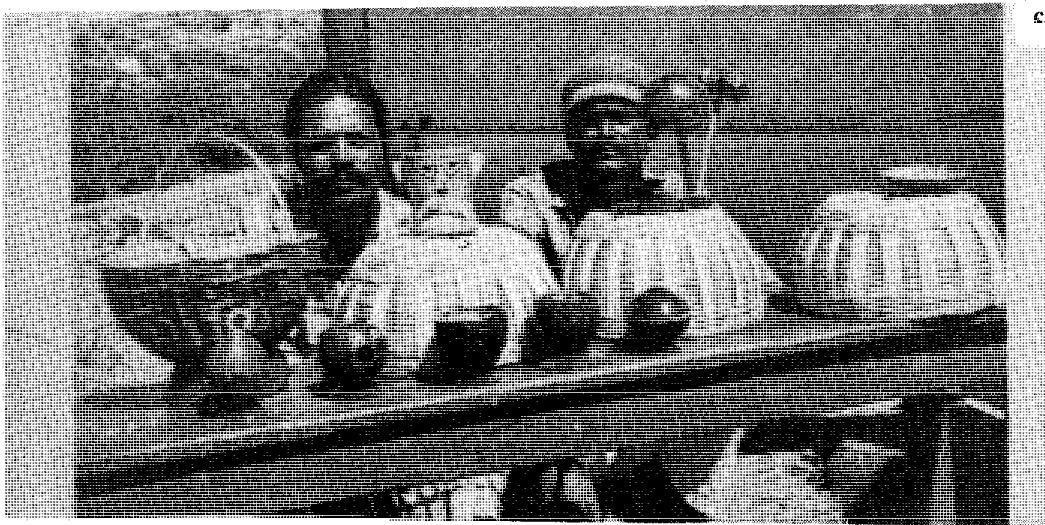
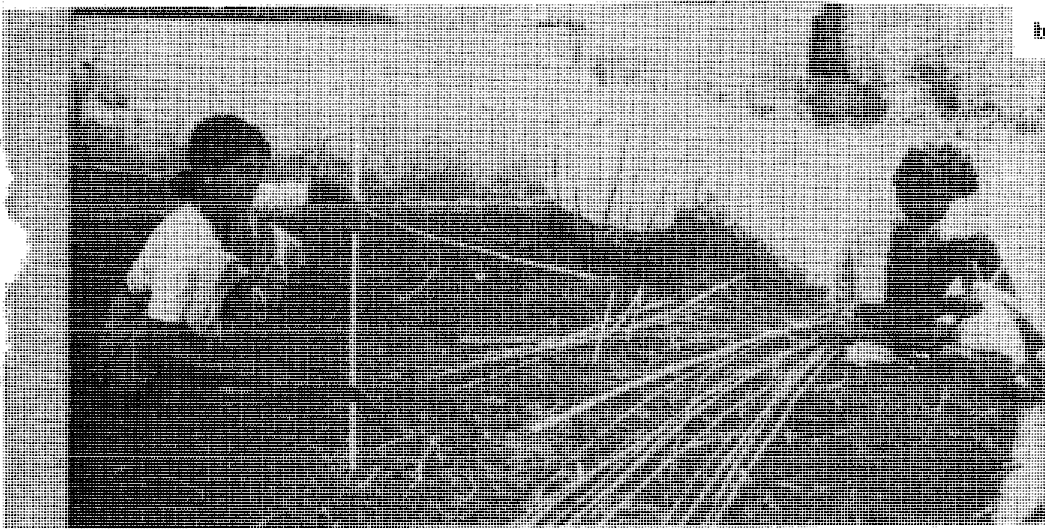
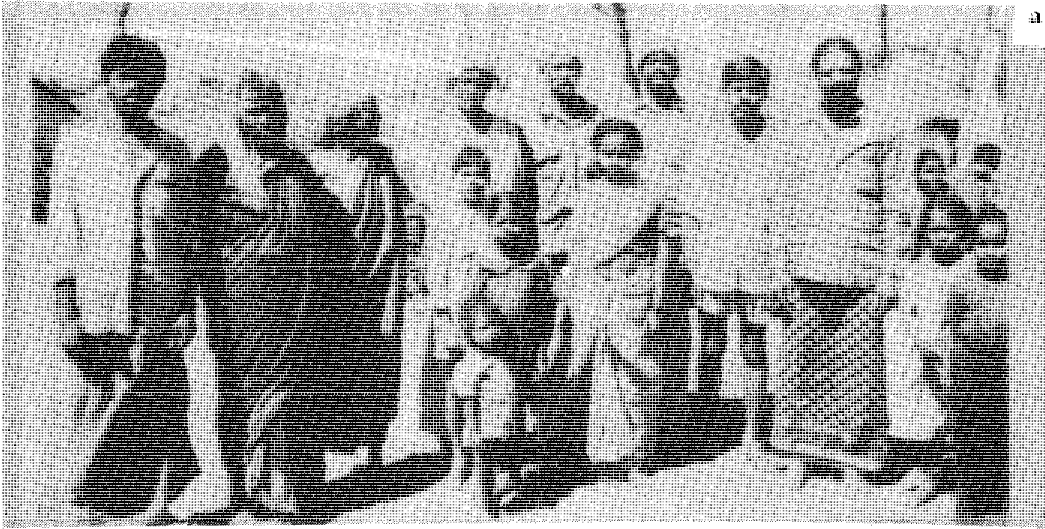
(a) & (b) Herostones of the Ganga times at Madivala-Marasur of the 10th century (c) Herostone, Anekal



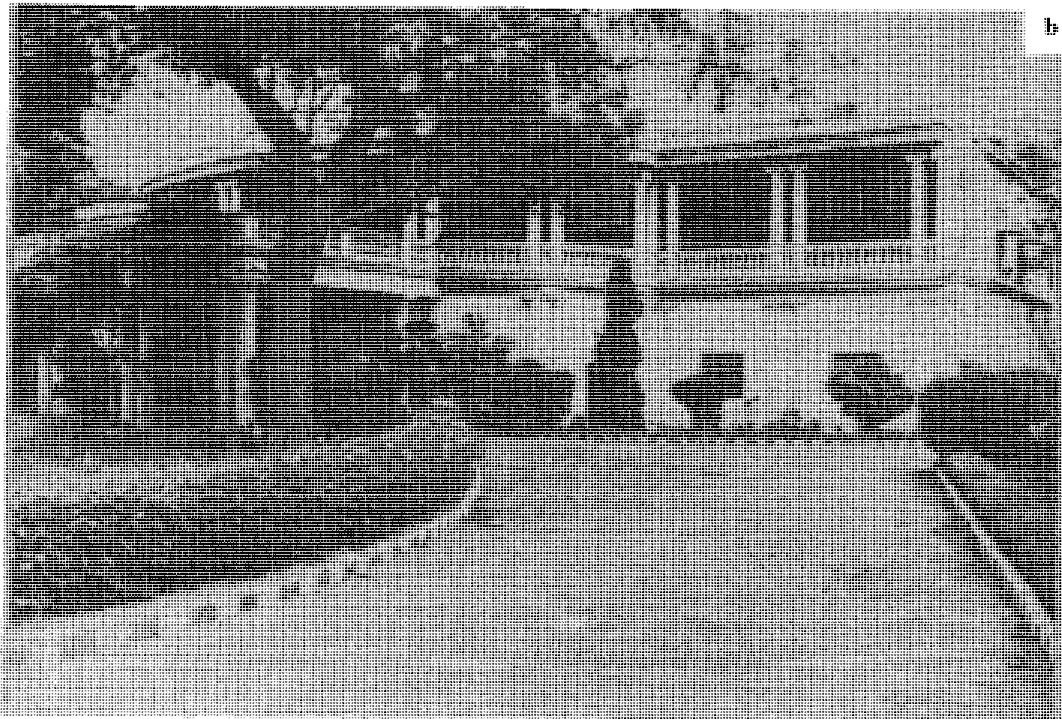
(a) Begur Herostone of the Gangas, now at Bangalore Museum, (b) Herostone from Billishivale, (c) Herostone from Lalbagh.



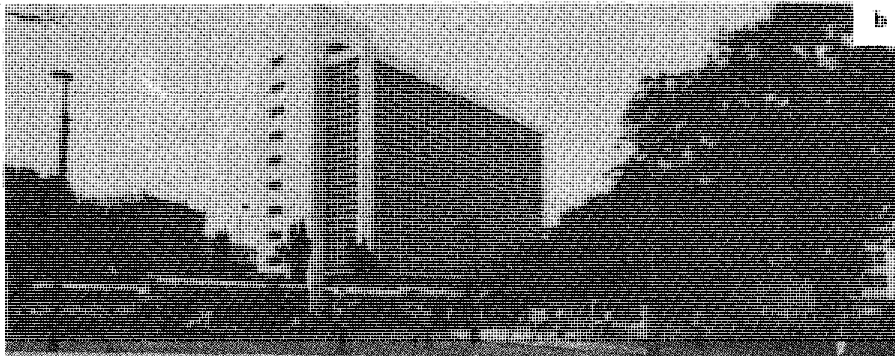
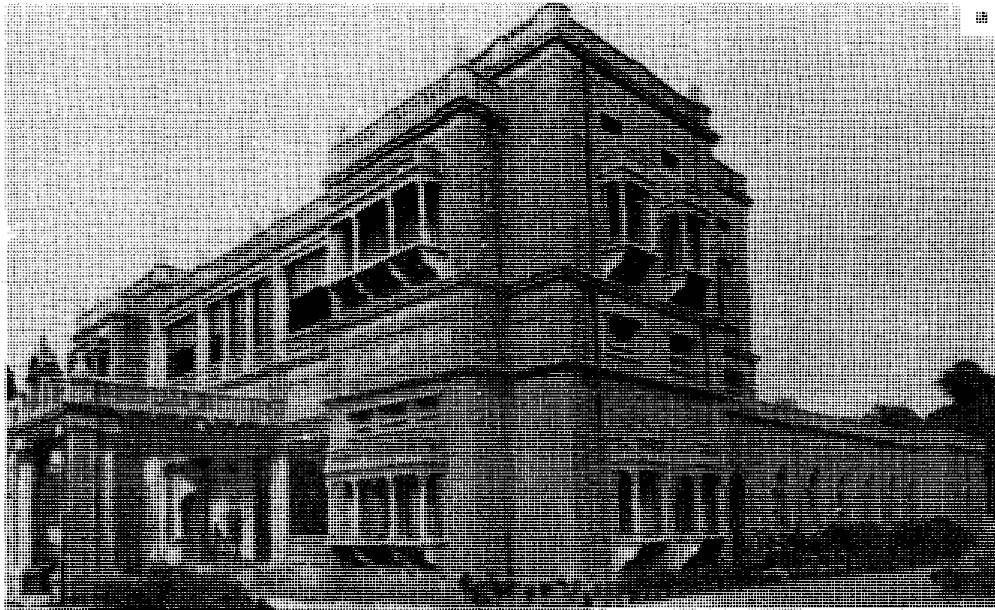
(a) Bangalore Palace of Tipu. (b) Bangalore Fort gate. (c) Bangalore Palace (1880 A.D.)



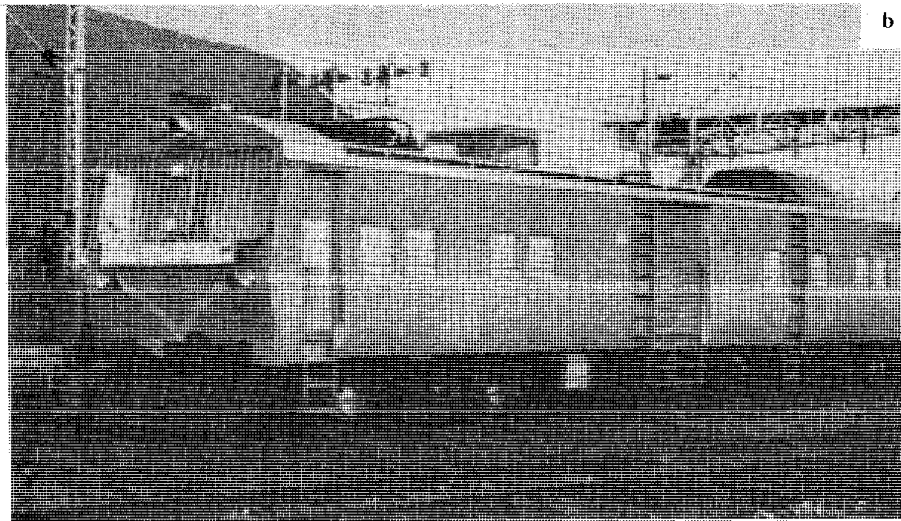
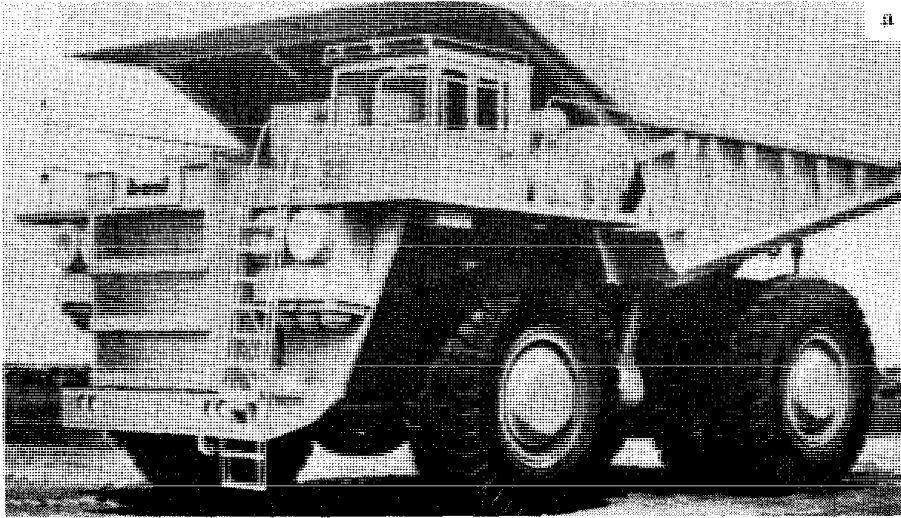
(a) The Hakkipikkis, Bestamaranahalli. (b) The Iruligas weaving baskets. (c) The Hakkipikkis learning new crafts.



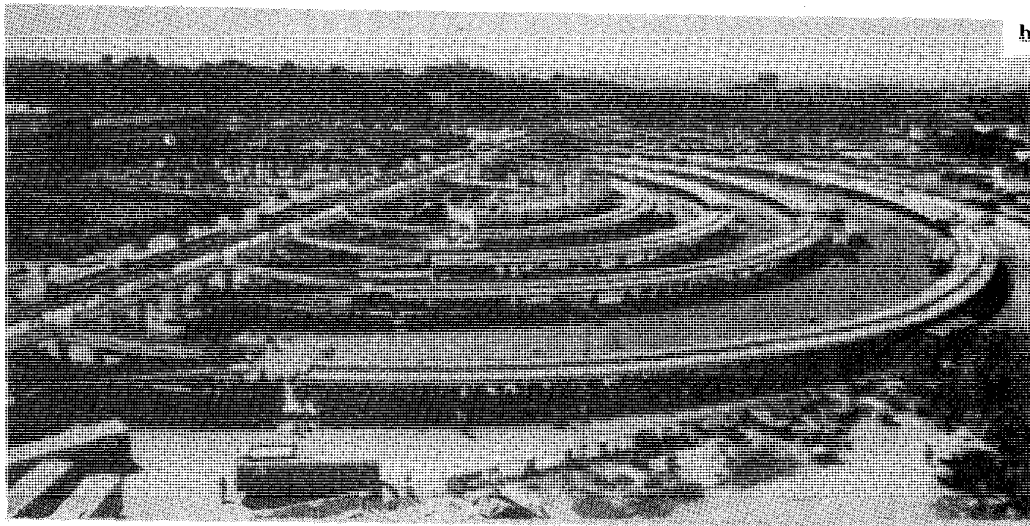
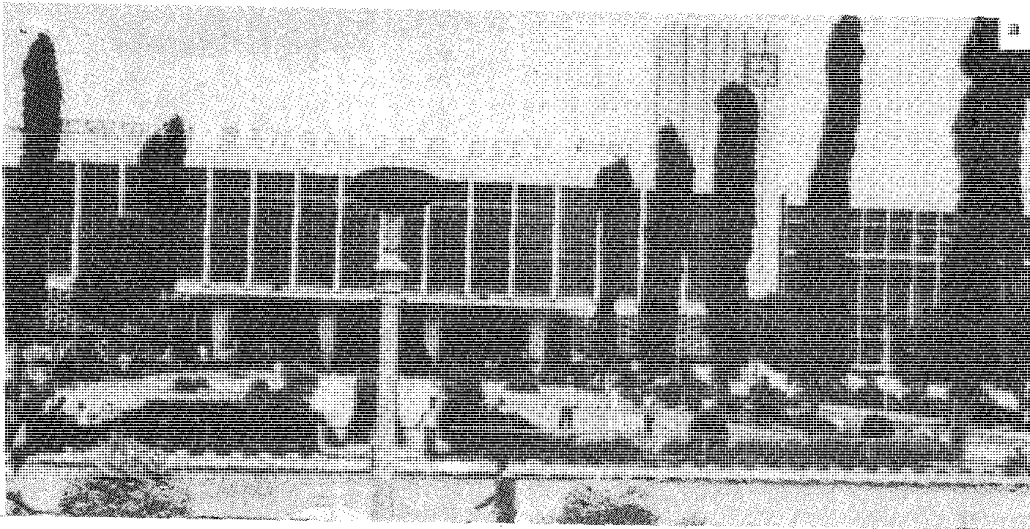
(a) Canara Bank Administrative Office (b) The State Bank of India (original branch of Madras Presidency Bank), St. Marks Road, Bangalore.



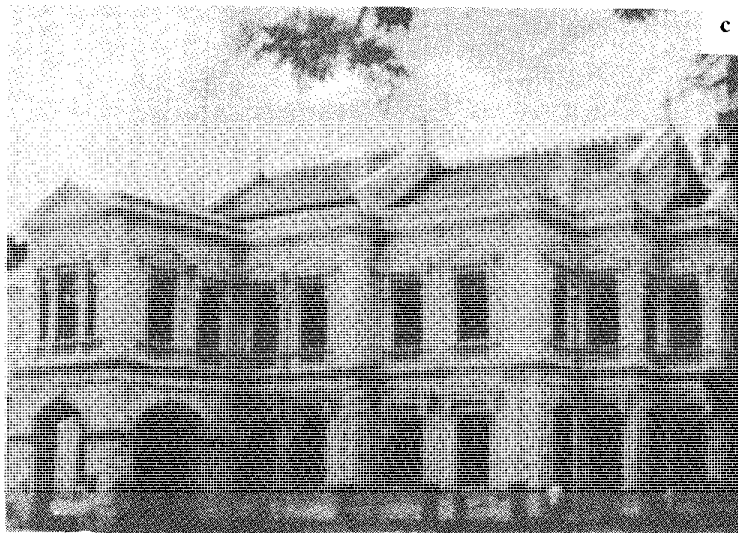
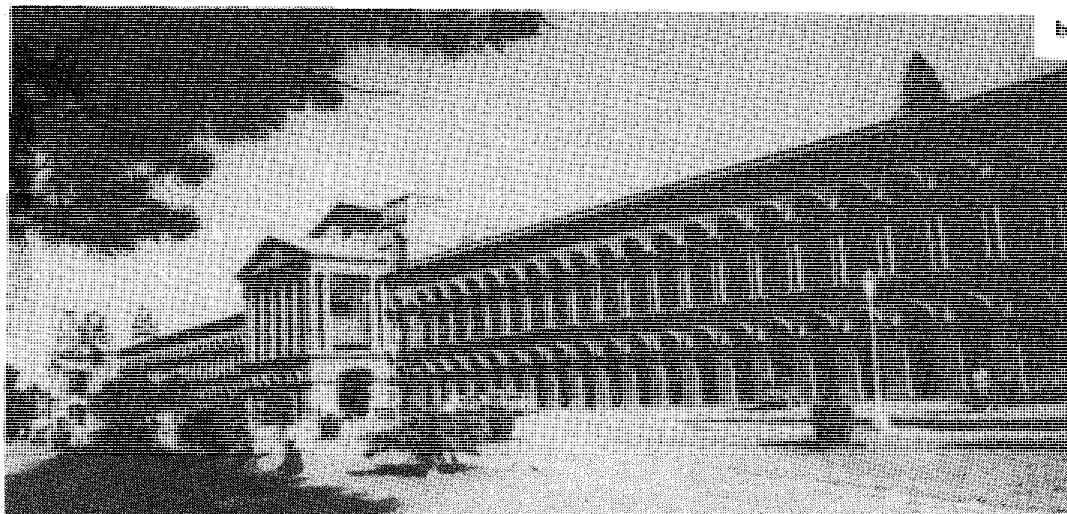
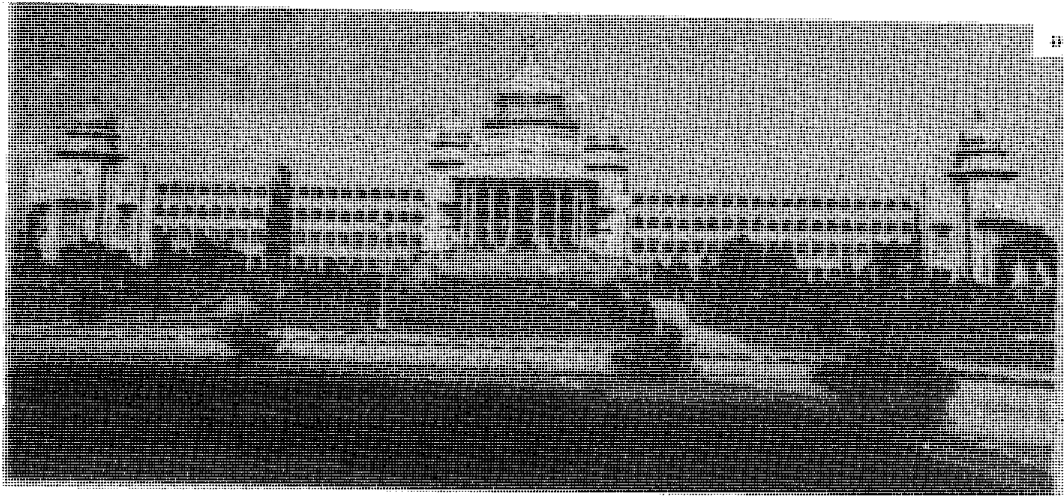
(a) State Bank of Mysore, Mysore Bank Square. (b) State Bank of Mysore new Building (c) Bangalore City Co-op. Bank Ltd.



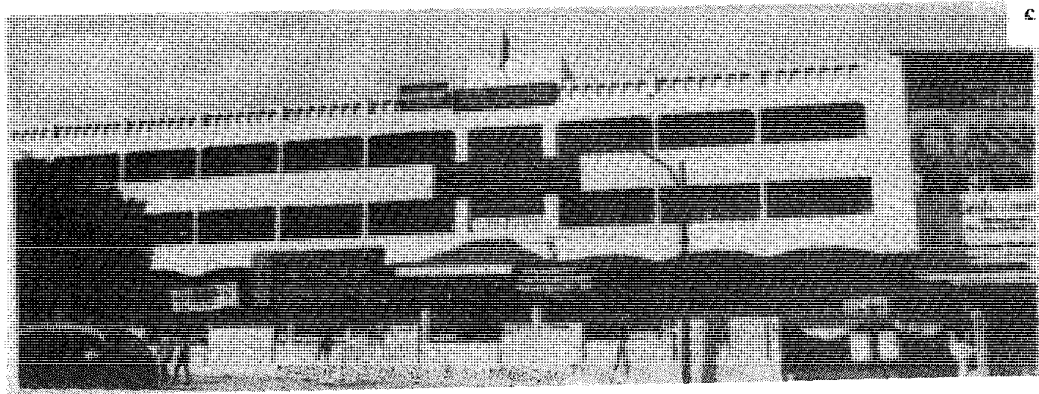
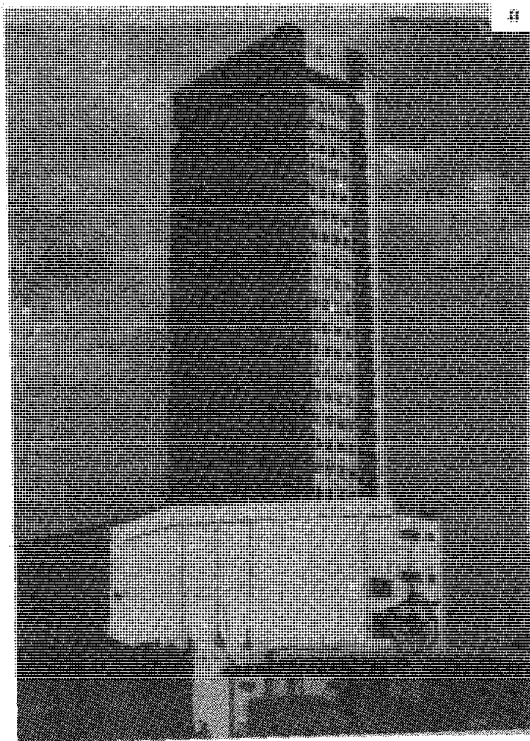
(a) Rear dump truck, product of BEML. (b) Overhead Electric Inspection Car, BEML product.
(c) Copter from HAL.



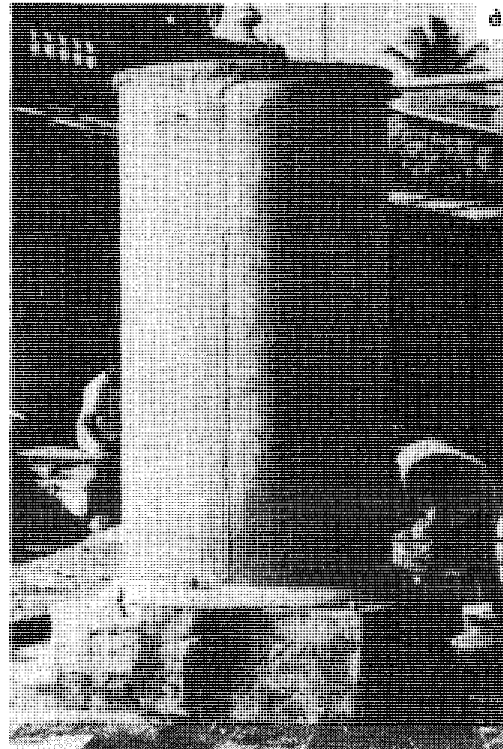
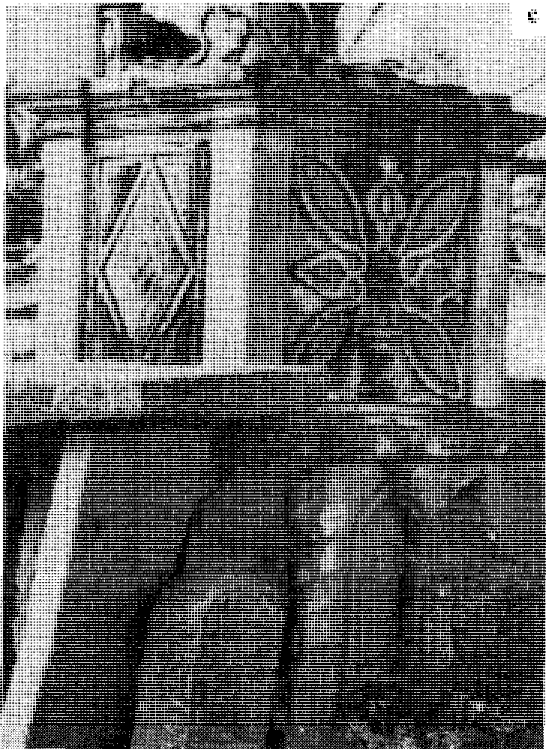
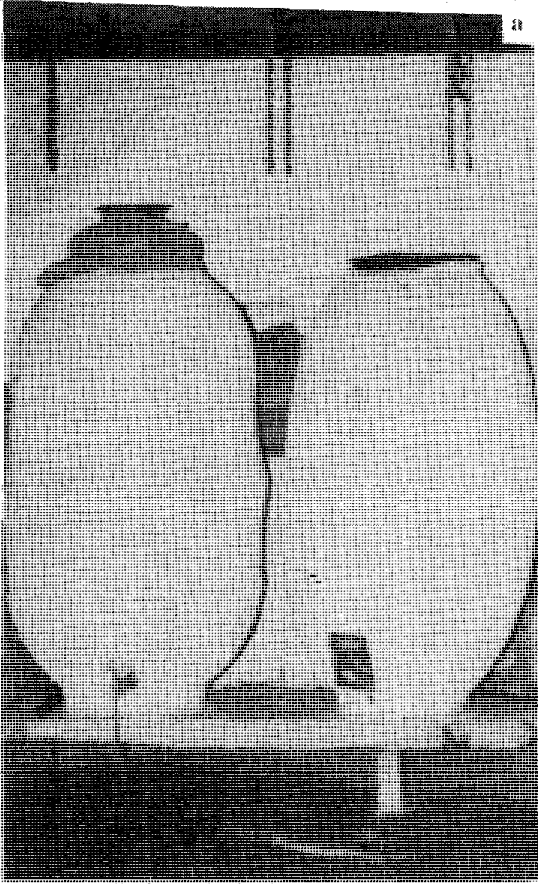
(a) Bangalore City Railway Station. (b) City Central Bus Stand. (c) The General Post Office.



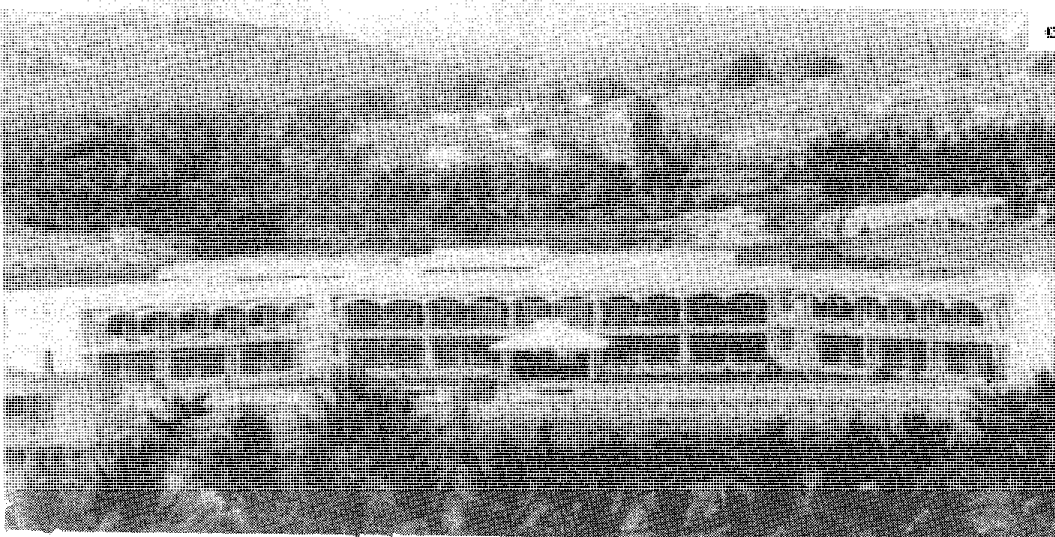
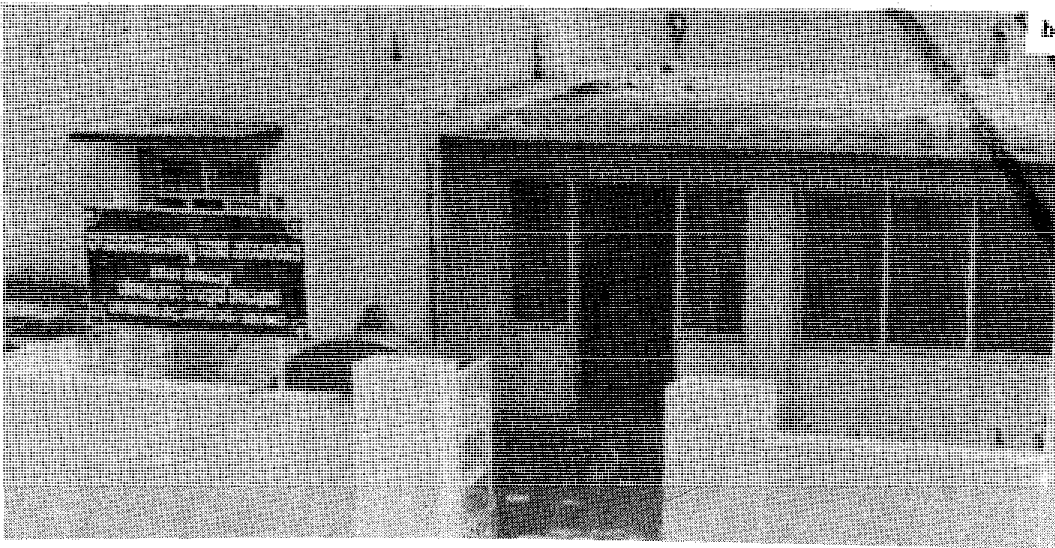
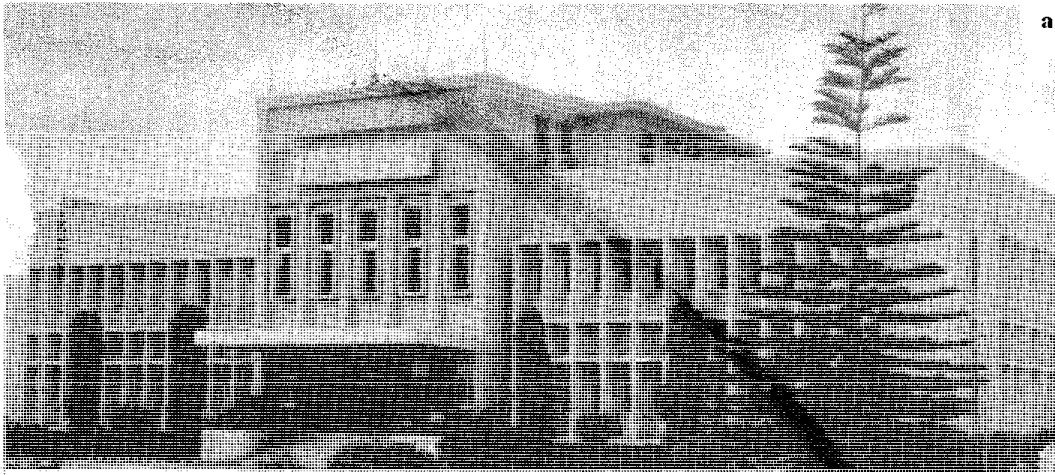
(a) The Vidhana Soudha, (b) The High Court Bldg (former 'Athara Cutcheri'). (c) The Mayo Hall.



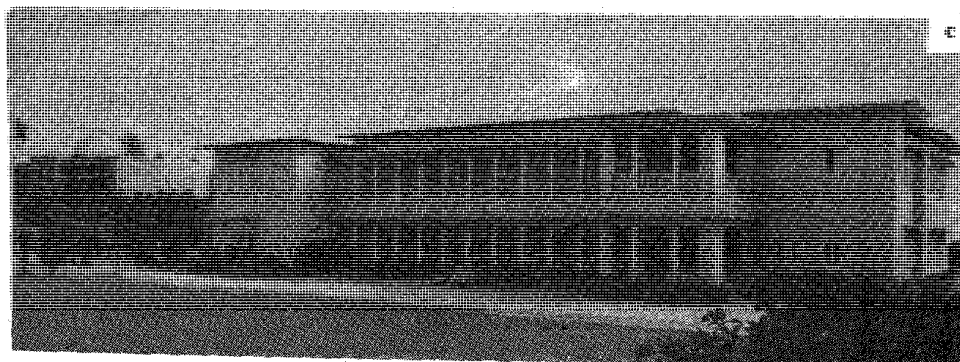
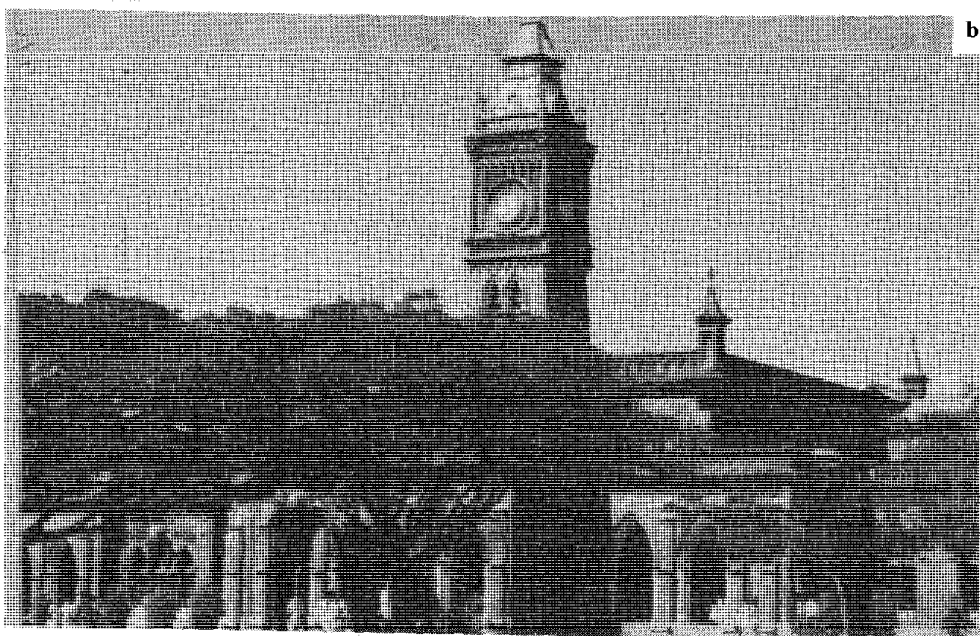
(a) The Utility Bldg. (b) The Visveswaraya Towers. (c) The Deputy Commissioner's Office. (d) The Tahsildars' offices-Bangalore North and South.



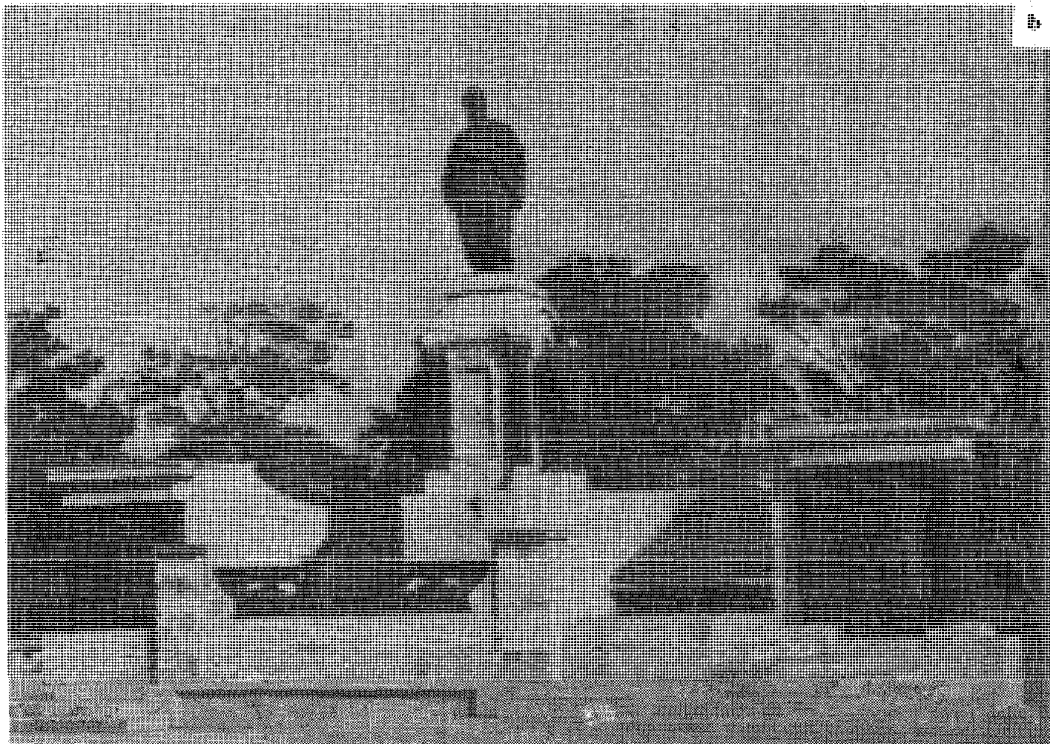
(a) Earthen barns. (b) Modern barn. (c) 'Salandra' on roadside for drinking water. (d) Modern water storage tank.



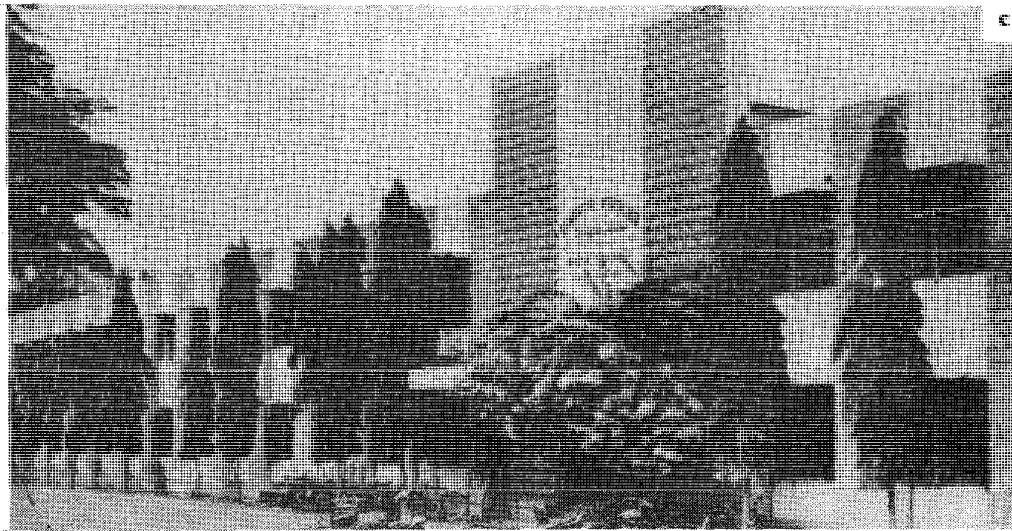
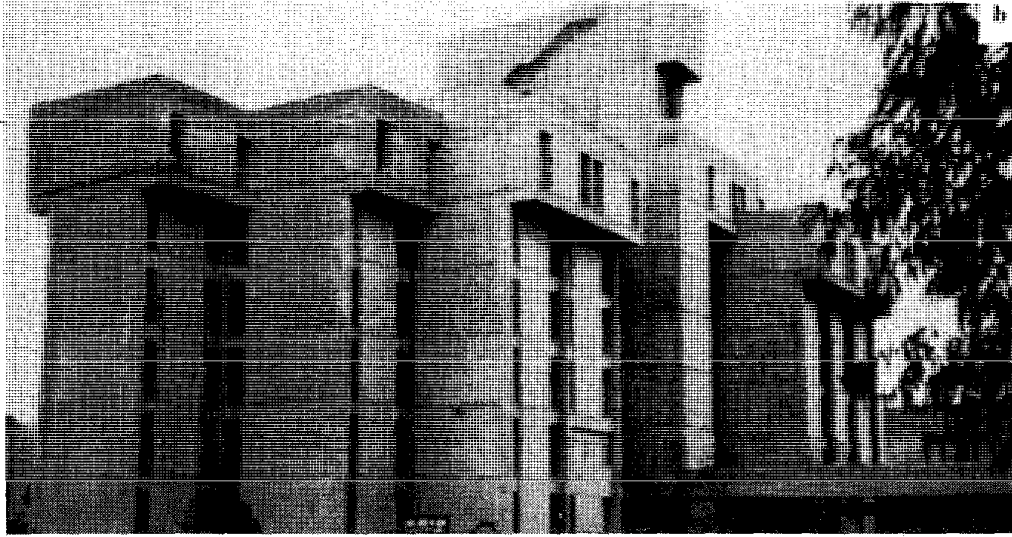
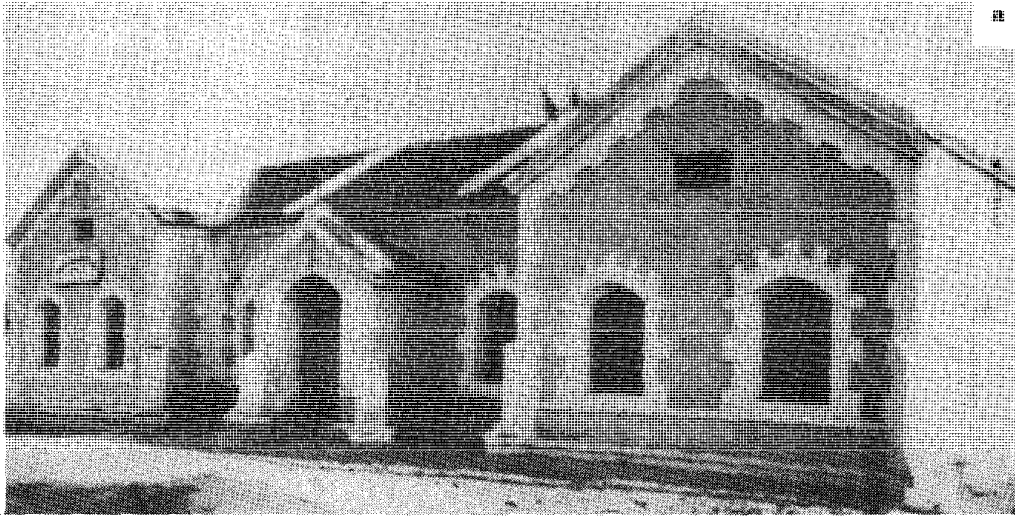
(a) Bangalore Dairy. (b) Town Panchayat Office, Devarajeevanahalli. (c) Co-operative Training College, (Padmanabhanagar), Bangalore



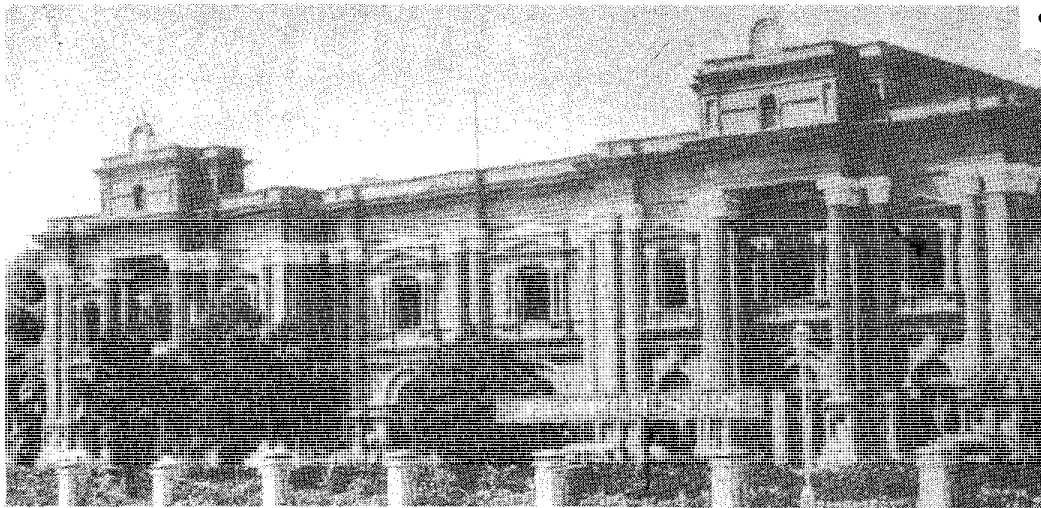
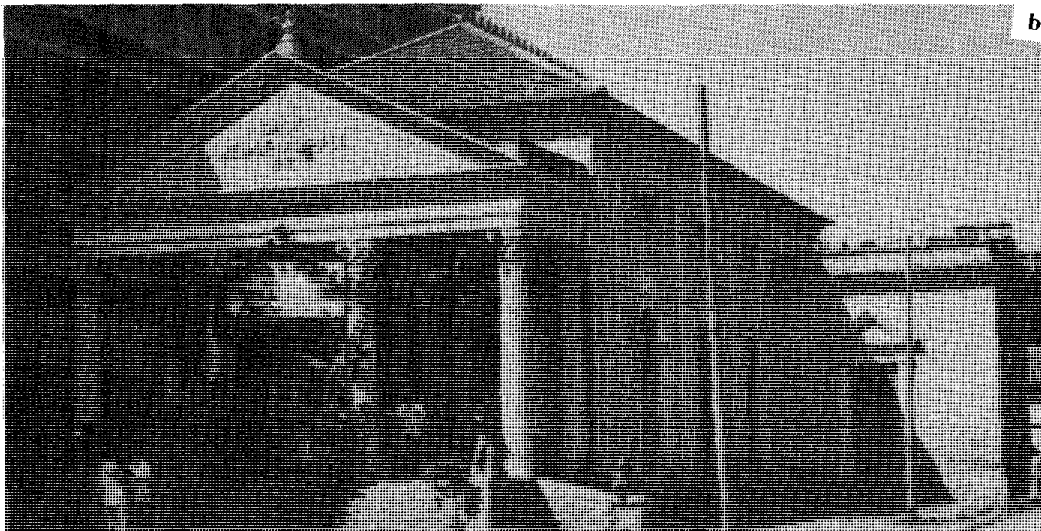
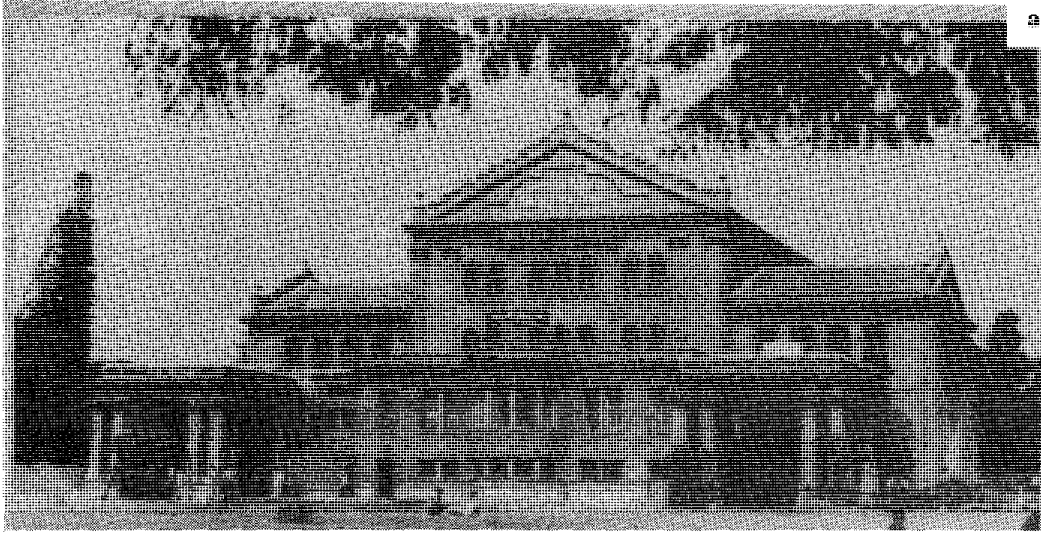
(a) Sri Krishnarajendra Technological Institute. (b) The Central College. (c) Raman's Research Institute.



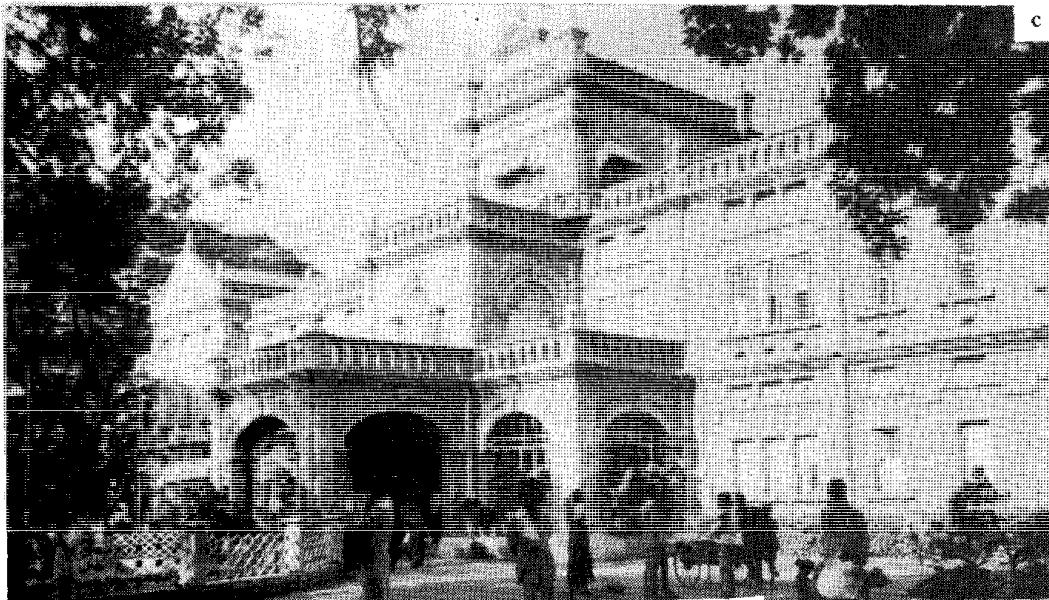
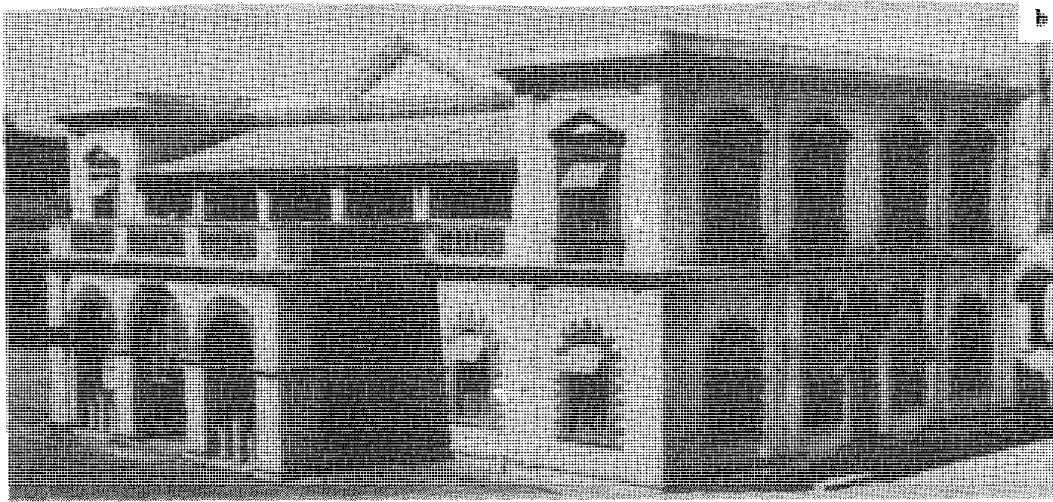
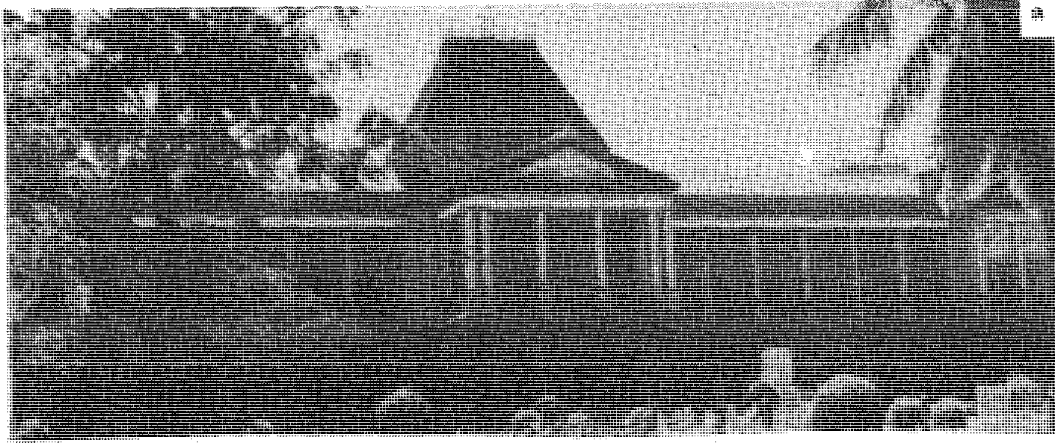
(a) The Indian Institute of Science. (b) Statues of Jamshetji Tata and others at the Institute.



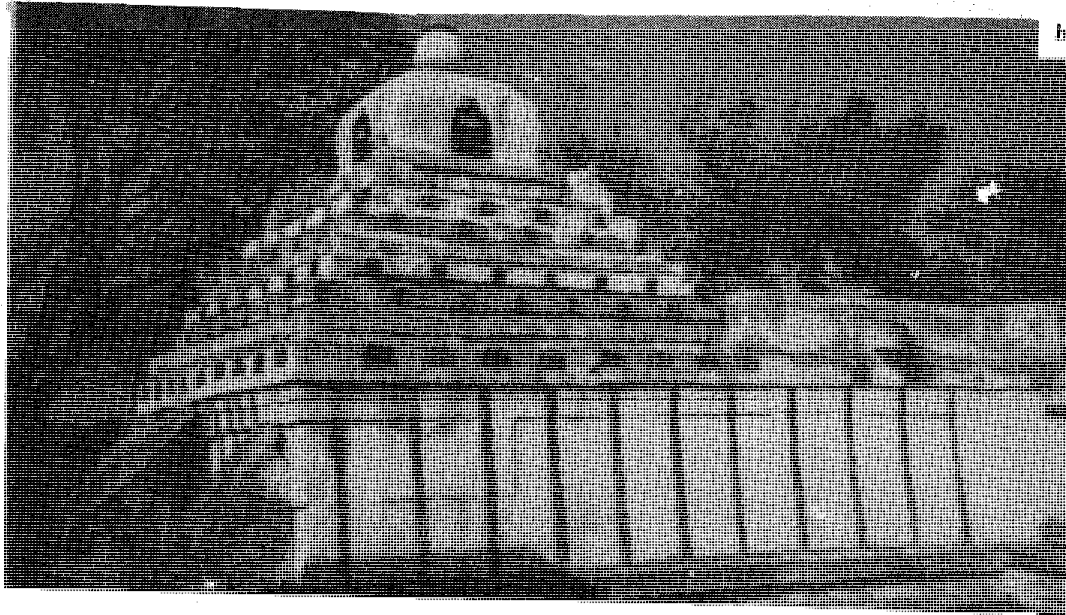
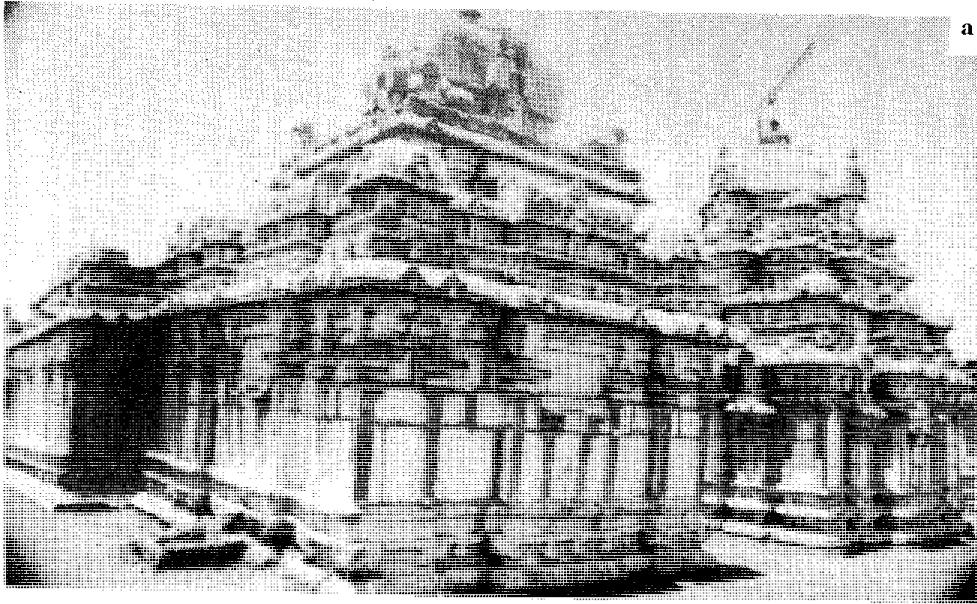
(a) Government Middle School at Sarjapura, one of the oldest institutions. (b) University of Agricultural Sciences, G.K.V.K., Administrative Block, (c) Kendriya Vidyalaya, Malleshwaram.



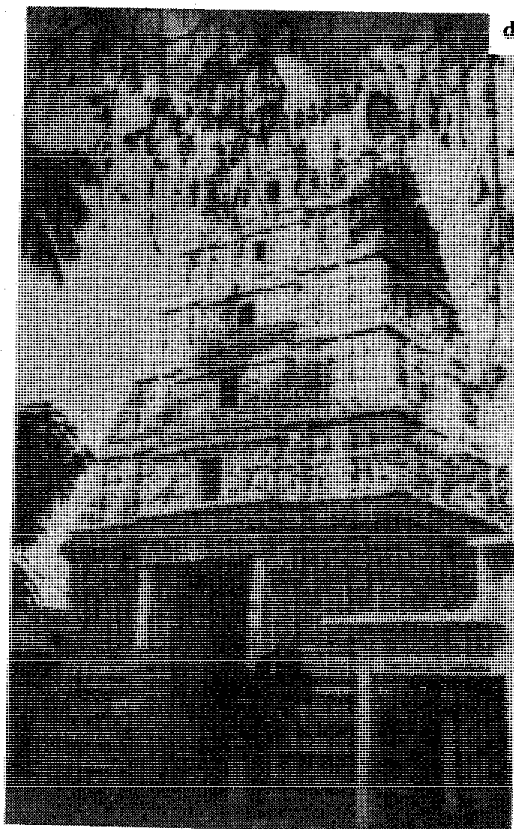
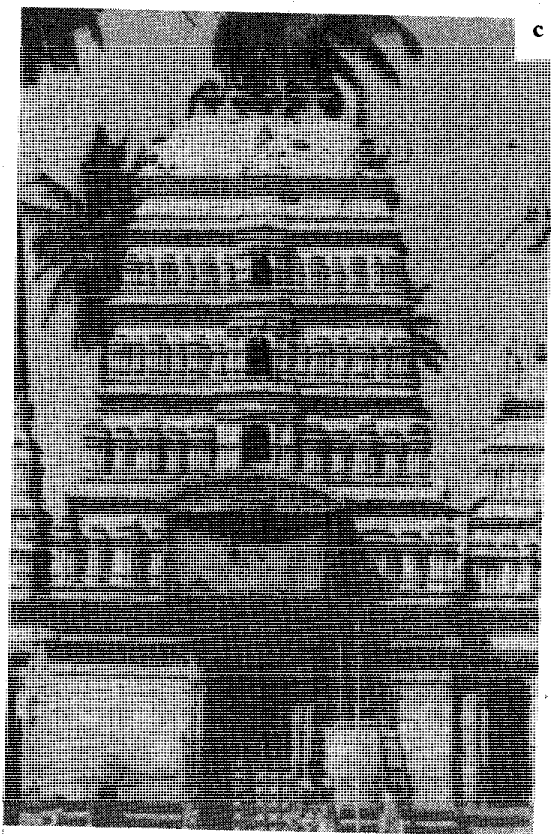
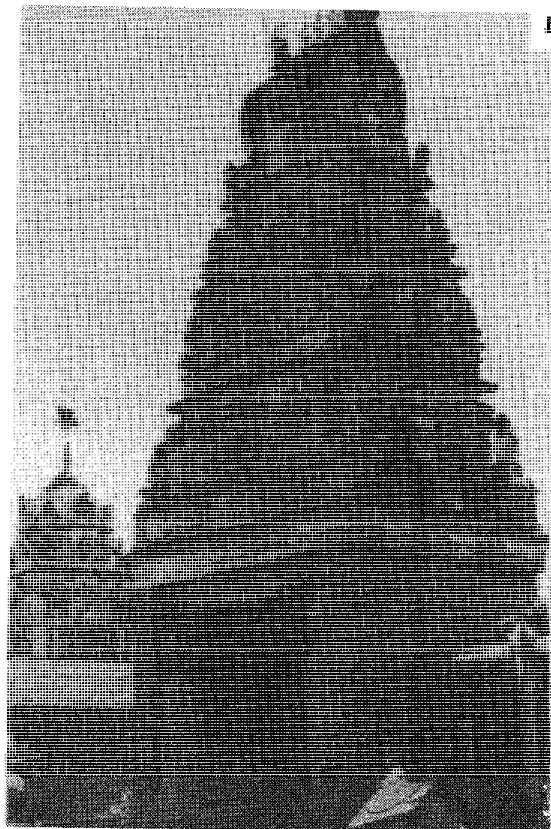
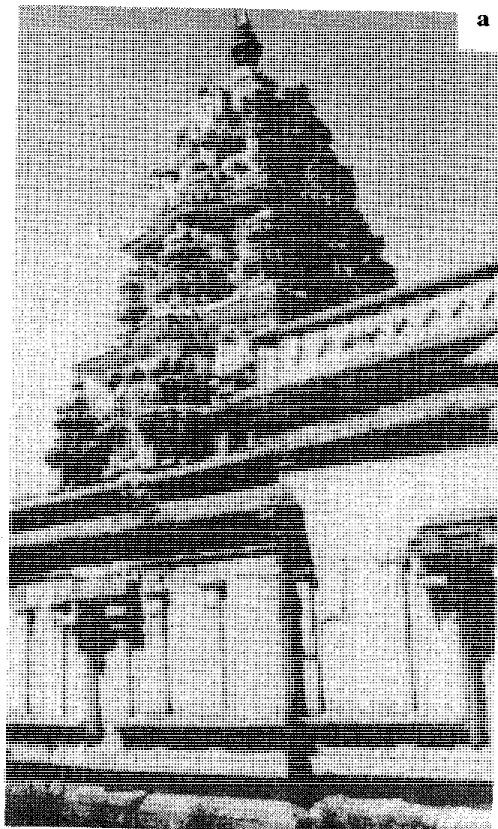
(a) The State Central Library (The Sheshadri Iyer Memorial Hall). (b) The Mythic Society. (c) Government Museum.



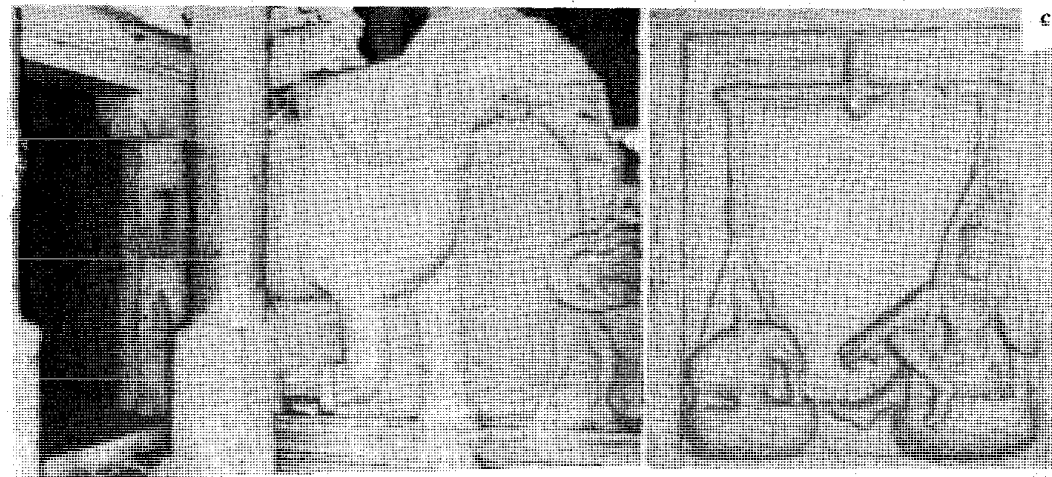
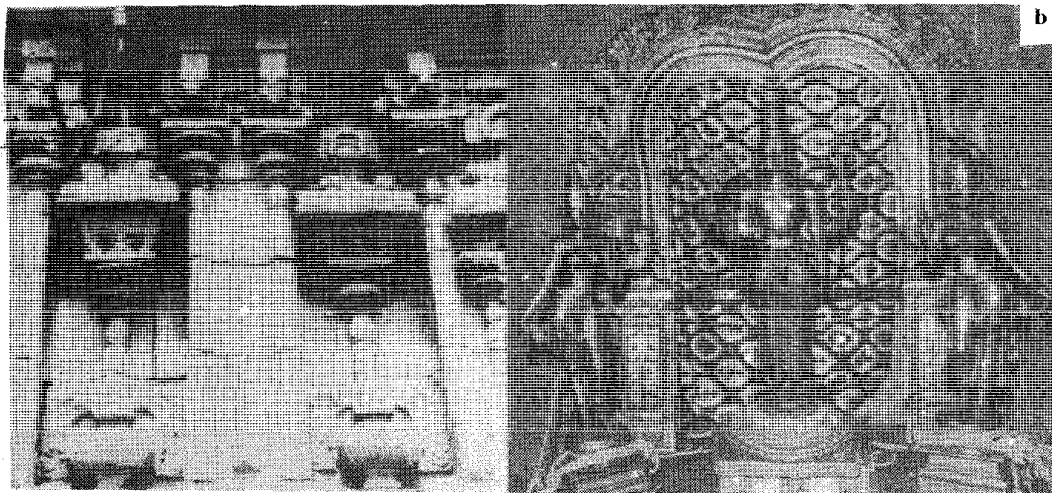
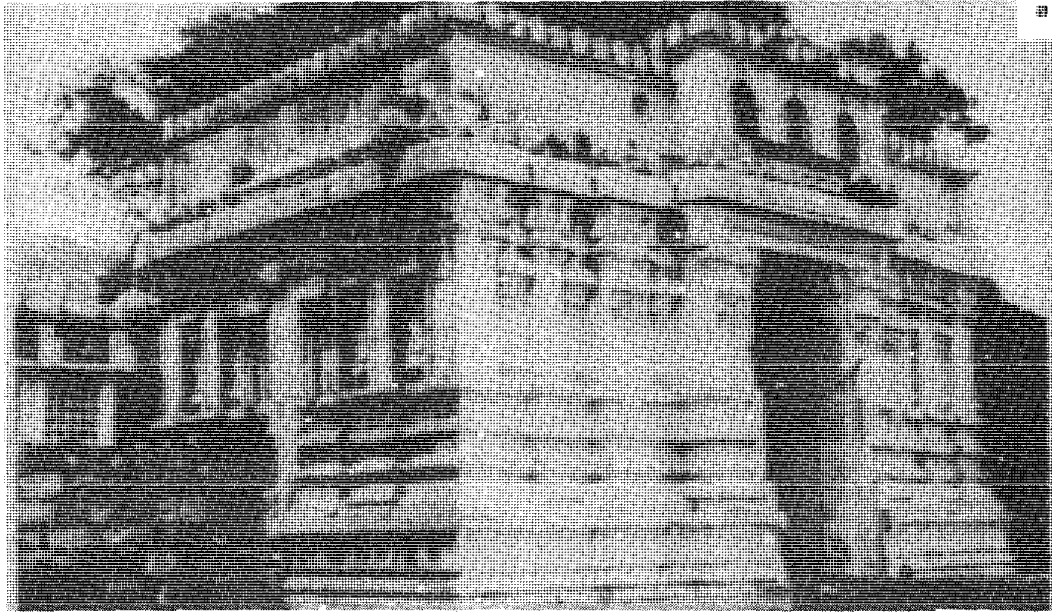
(a) The Victoria Hospital. (b) St. Martha's Hospital, (c) Minto Ophthalmic Hospital.



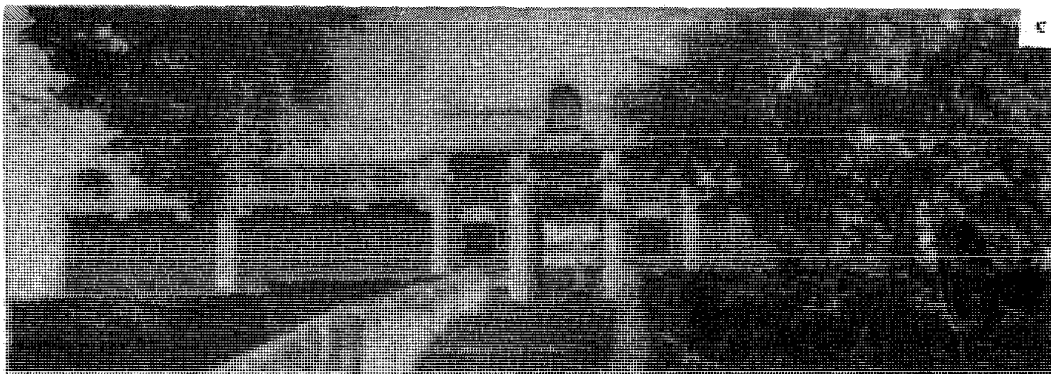
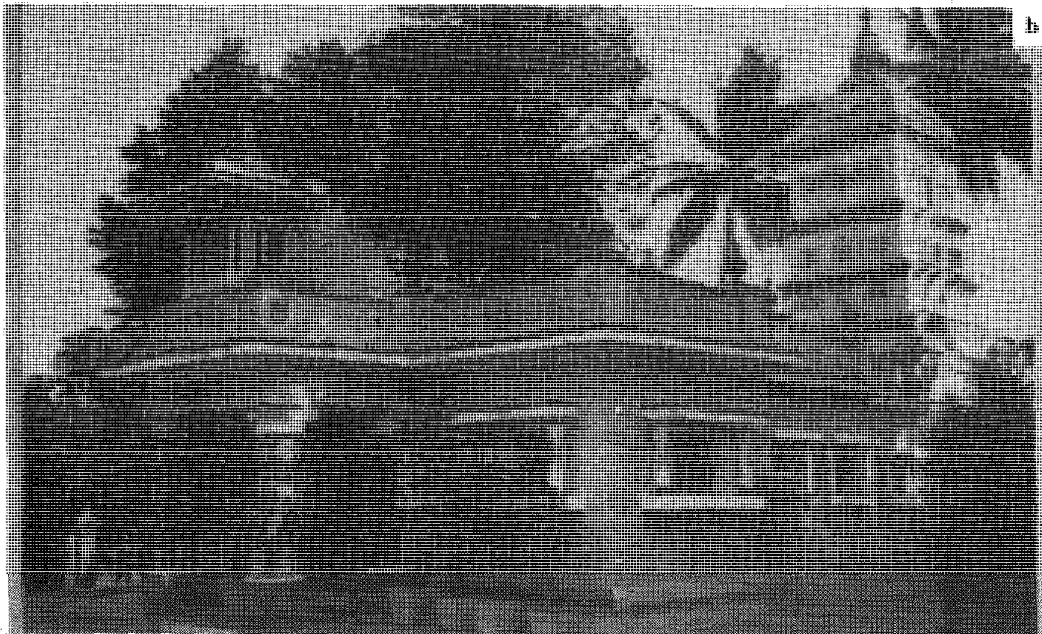
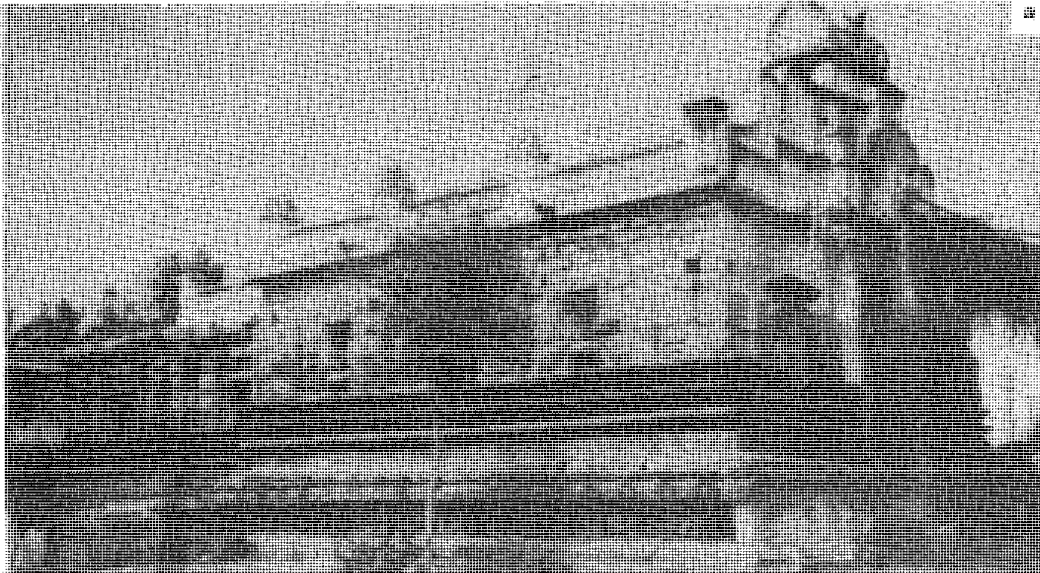
(a) The Begur Choleswara and the Nageshwara temples (b) The Dharmeshwara at Aigandapura.
(c) The Shiva temple at Jyothipura.



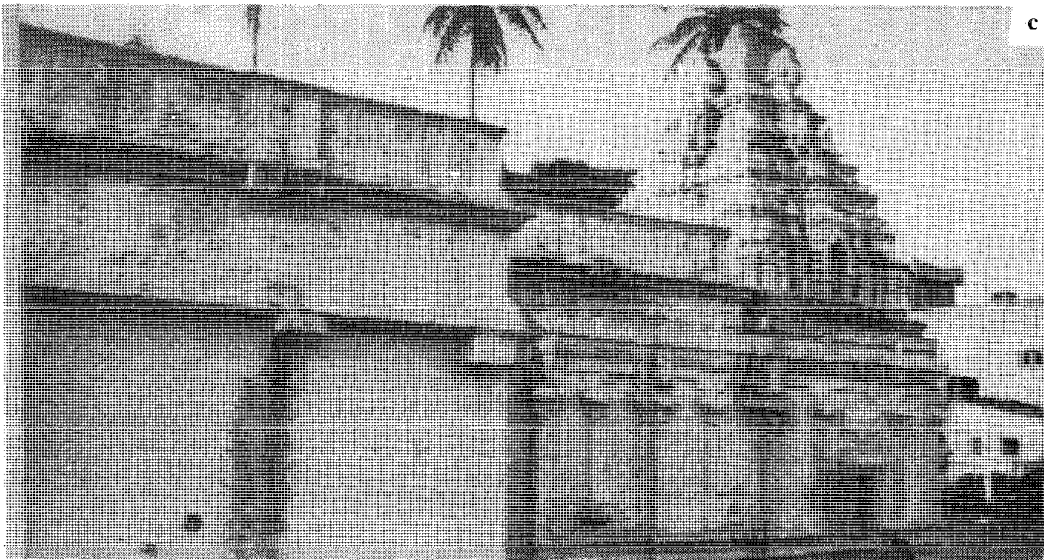
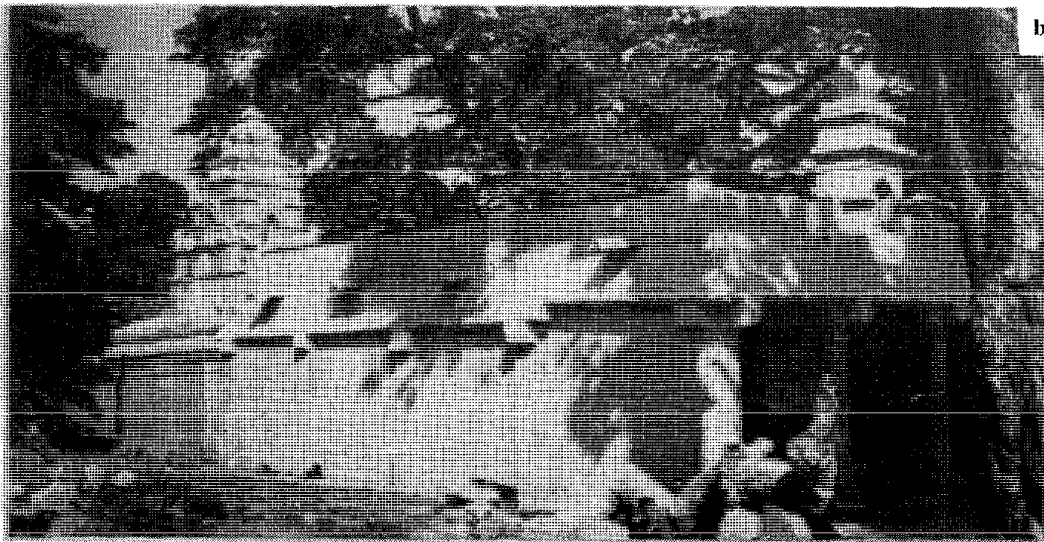
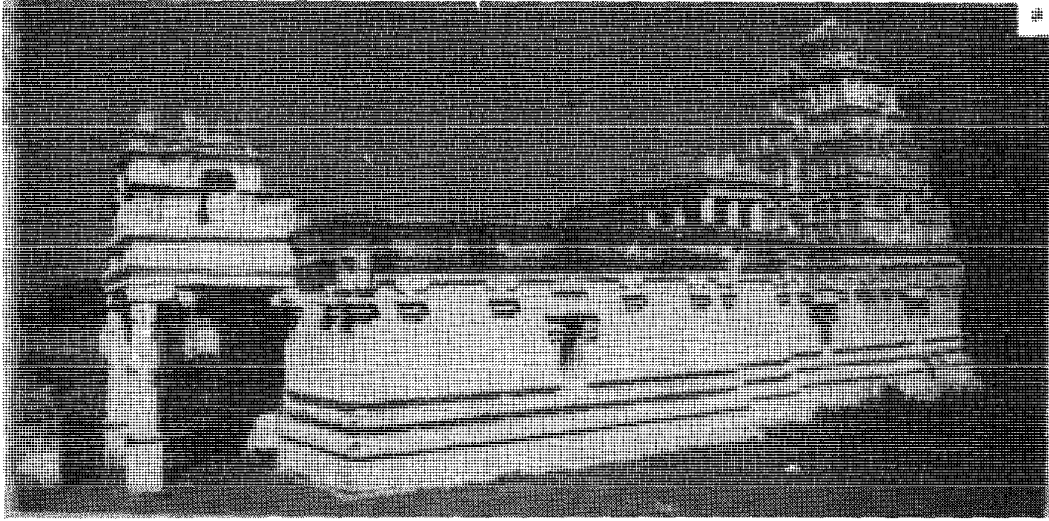
The Gopuras of (a) The Varadaraja of Narayanaghatta, (b) The Hanuman at Banasawadi, (c) The Dharmaraya at Bangalore, (d) and the Someshwara at Ulsoor



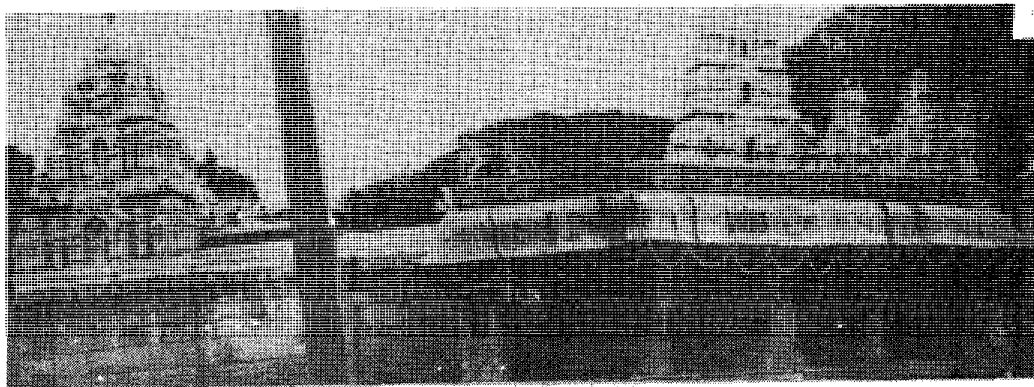
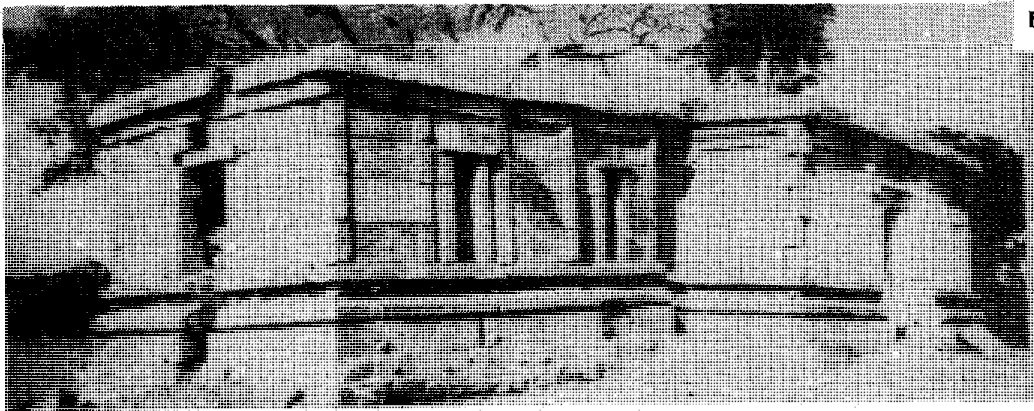
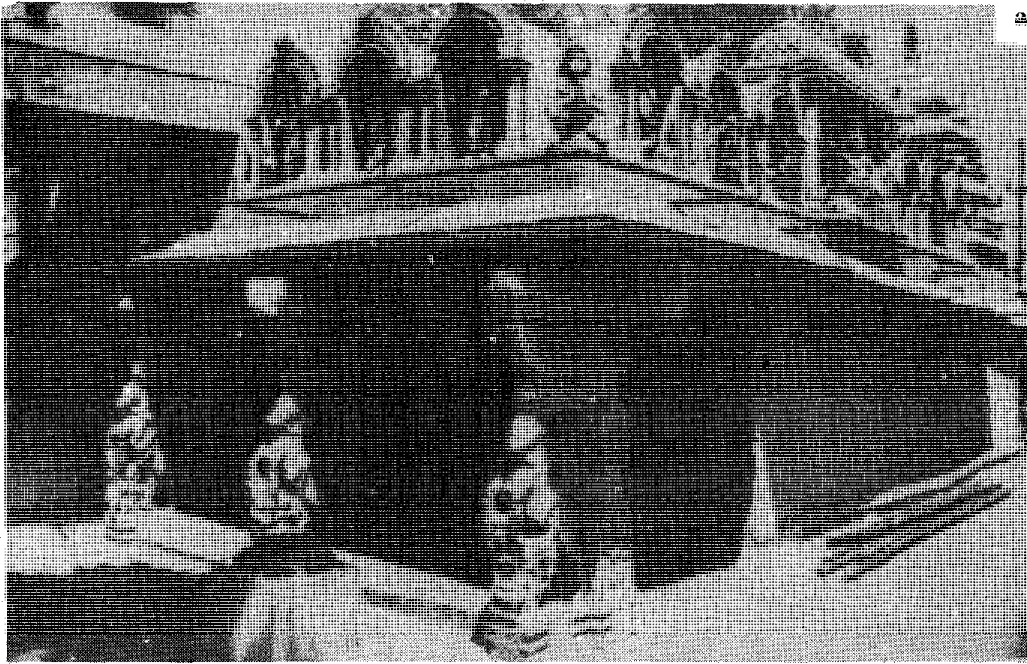
The Bannerughatta Champakadhama Swamy temple: (a) Mahadwara, (b) Wall engravings and *utsava murthis*, (c) Elephant beside the steps and sculpture on a pillar.



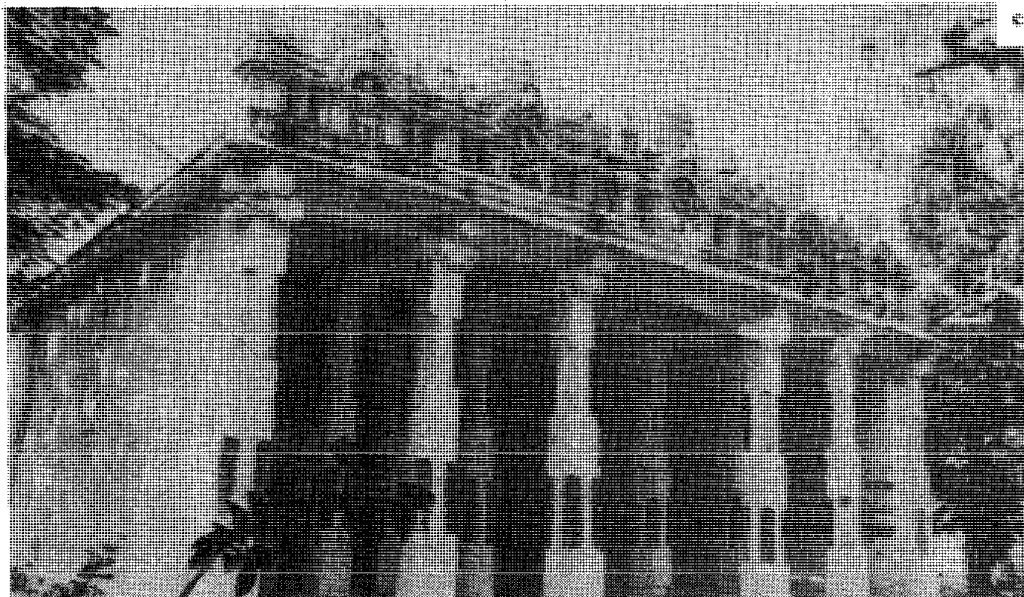
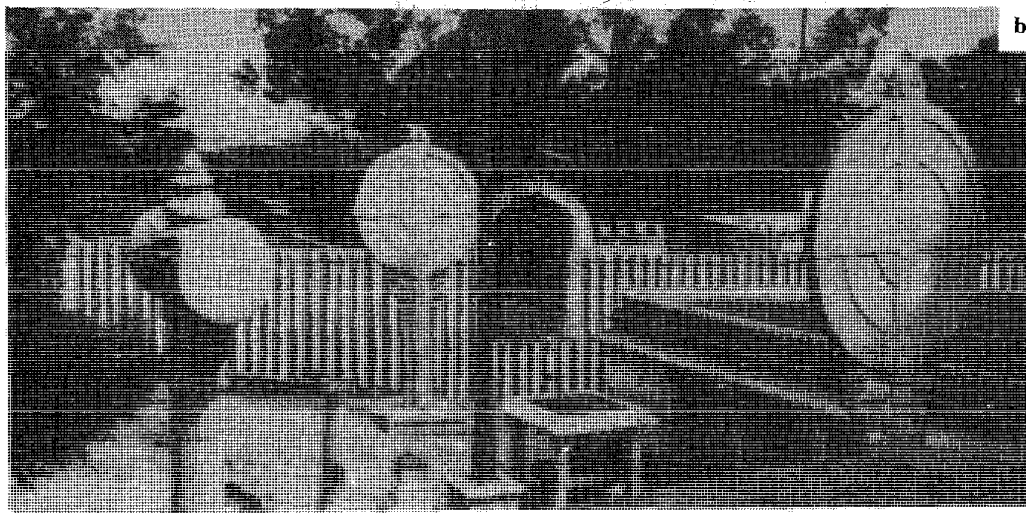
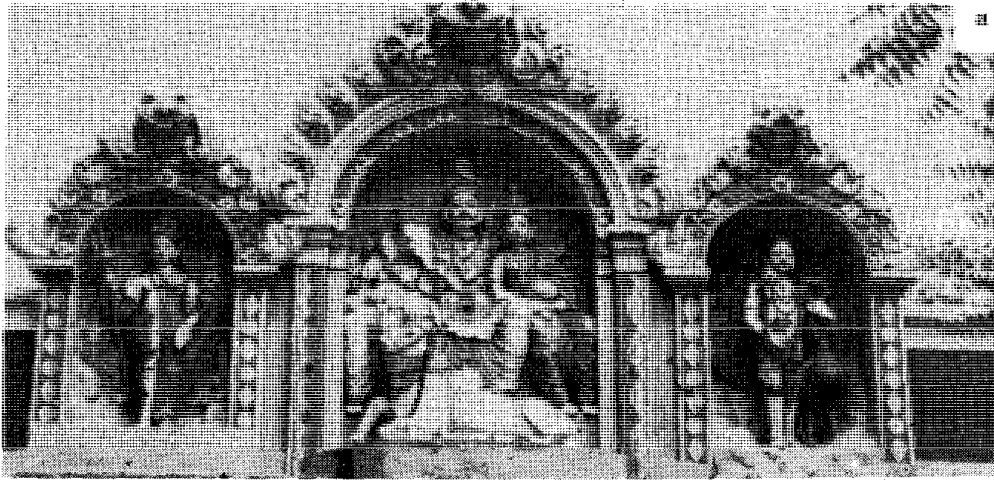
(a) The Someshwara temple, Doddagubbi (b) The Channakeshava, Sondekoppa. (c) The Kadumalleshwara temple, Malleshwaram, Bangalore.



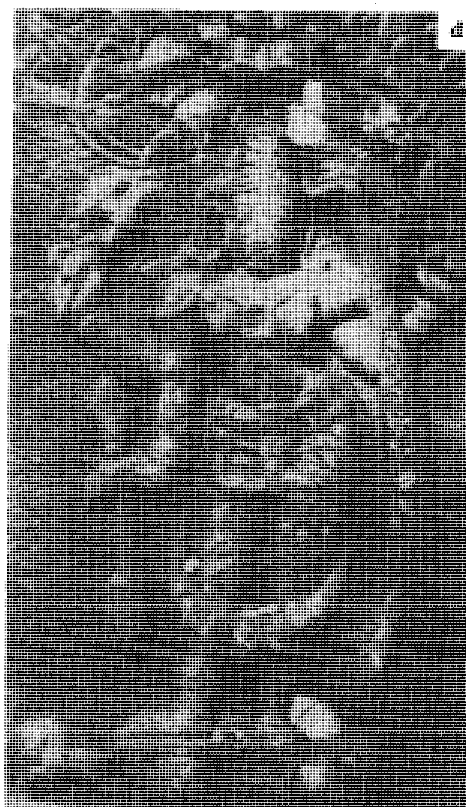
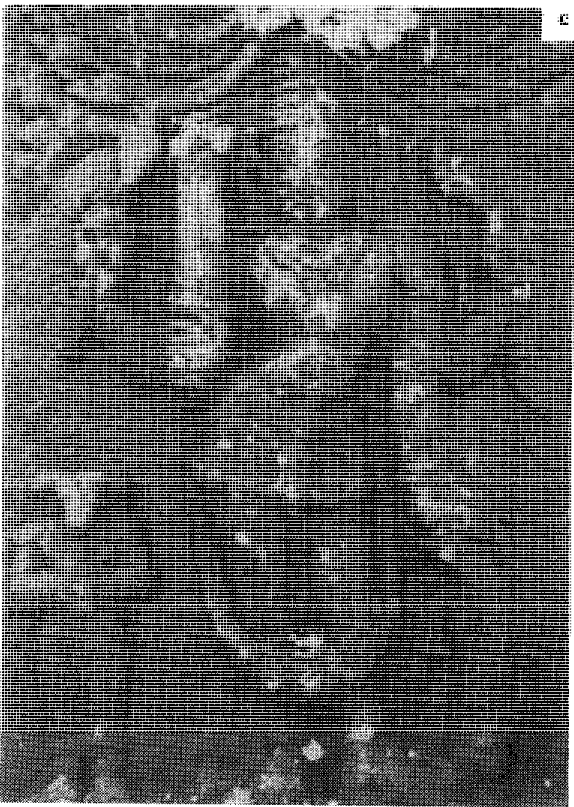
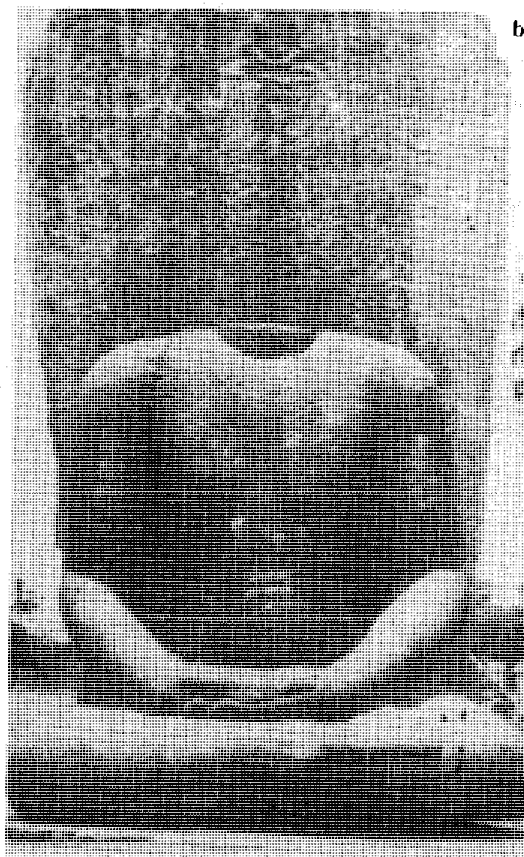
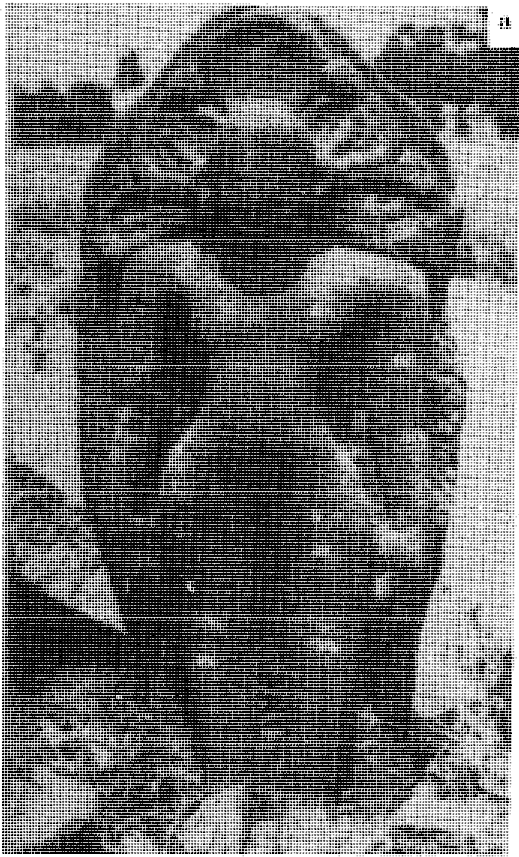
Temples of Anekal: (a) The Thimmaraya Swamy, (b) The Mallikarjuna and (c) the Chennakeshava.



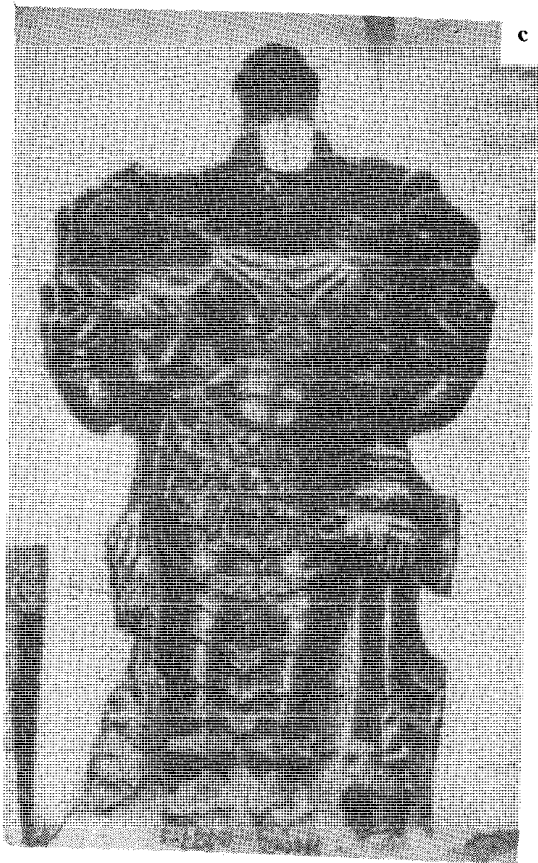
(a) The Ranganathaswamy (Rangaswamy temple Street, Bangalore). (b) The Someshwara temple, Gunjur (c) The Venkataramana, Fort, Bangalore.



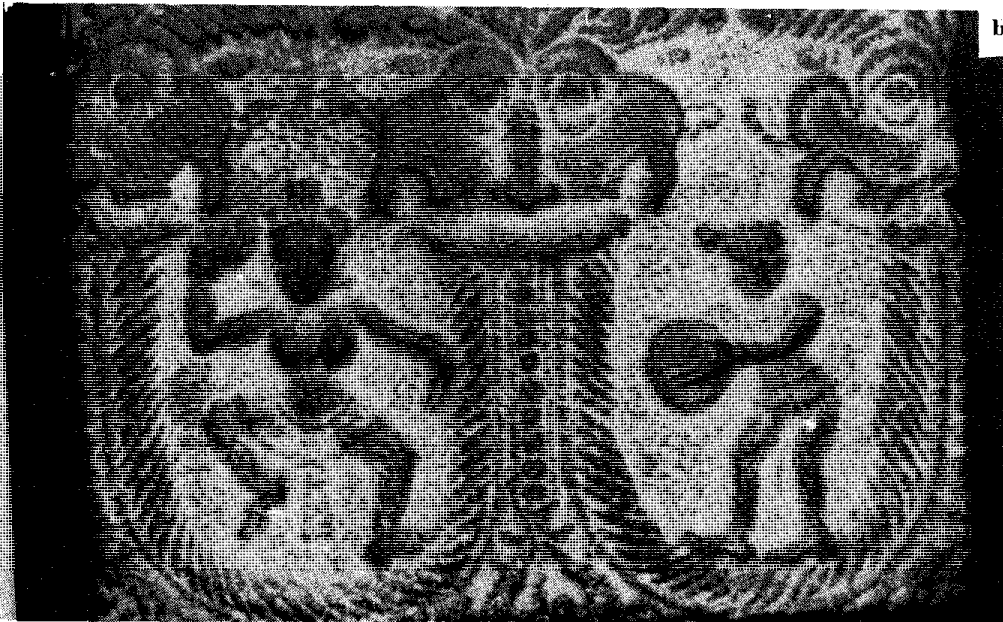
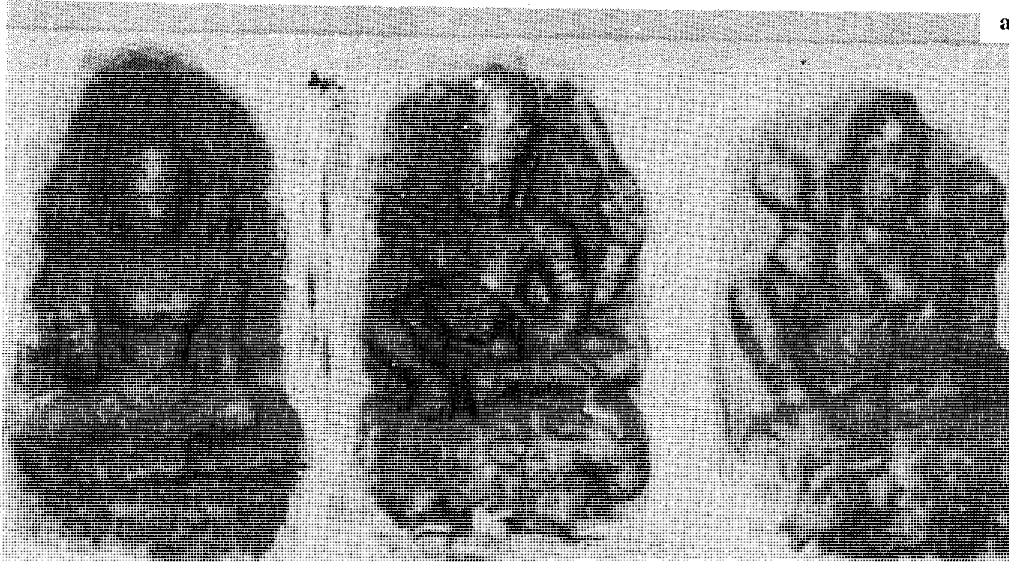
(a) The Kadumalleshwara (Malleshwaram)-stucco figures, (b) Front view of the Gavi Gangadhara, Bangalore. (c) The Basavanagudi, Bangalore.



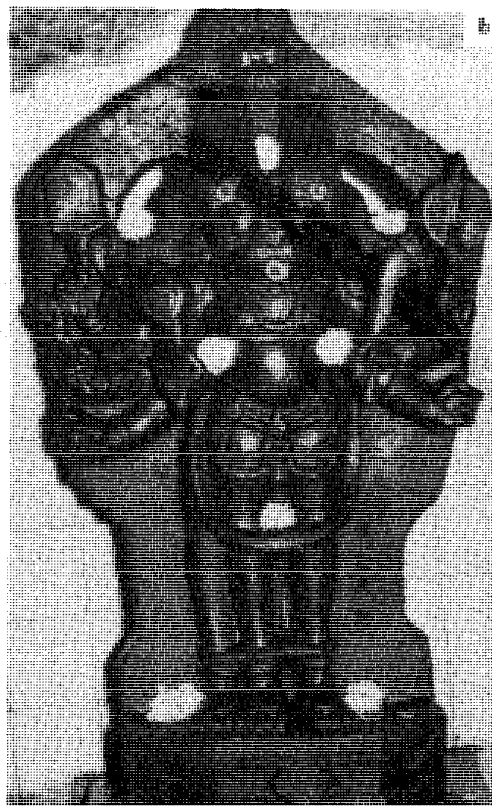
(a) Parshwanatha and (b) Broken Teerthankara images from Begur, (c) Veerabhadra and (d) Tripurantaka images from the Anekal Mallikarjuna Temple lamp pillar.



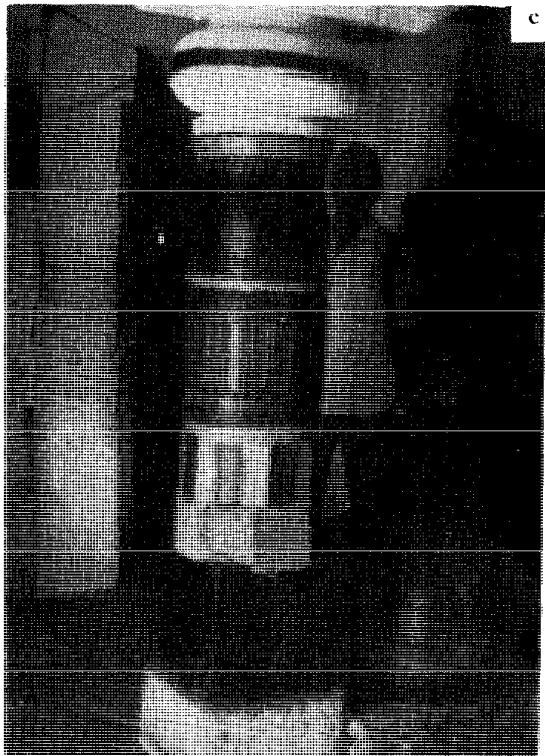
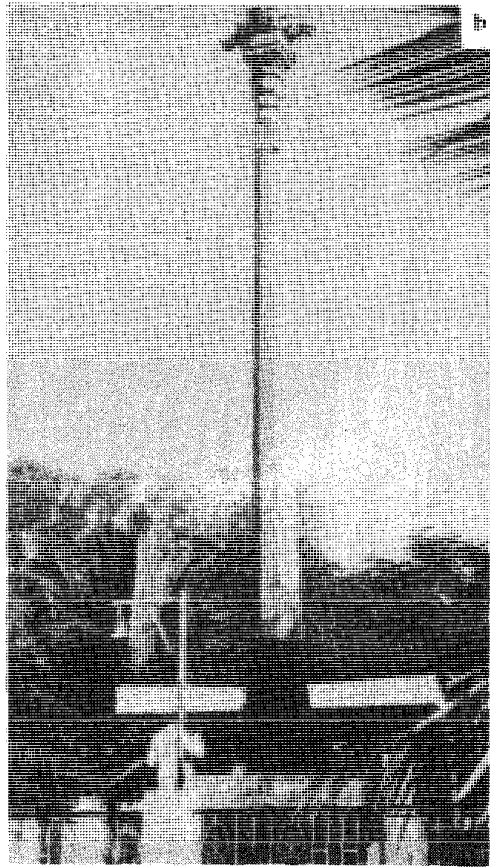
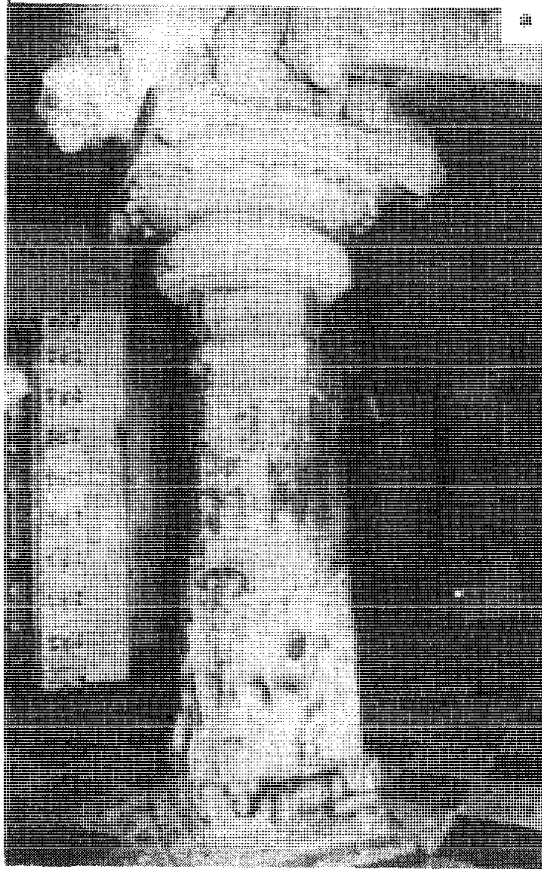
(a) Shiva, the Gavi Gangadhara temple (Bangalore) and a sculpture from Ittangur. (b) Dwarapala, the Bangalore Ranganathaswamy temple, and Skandha from Begur.



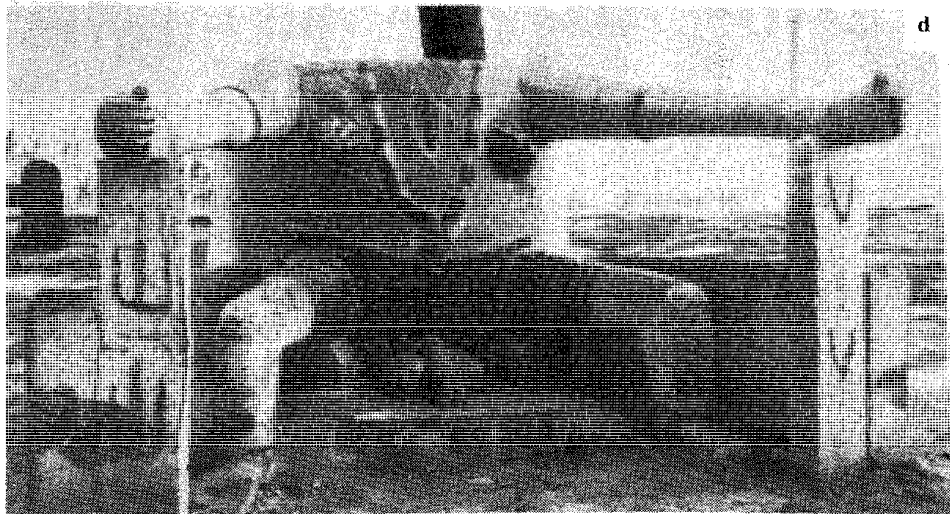
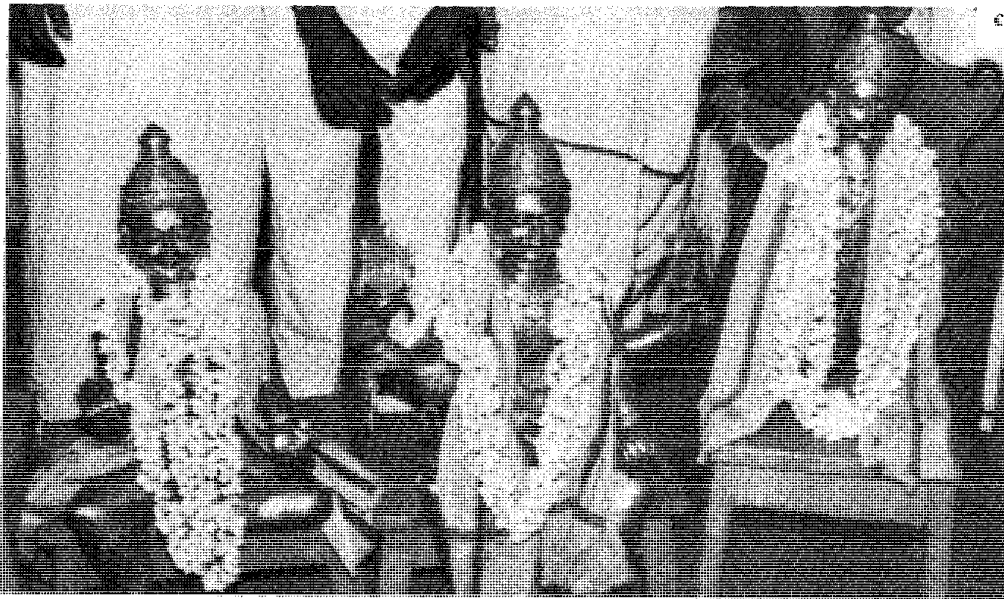
(a) The Mathrikas from the Dharmeshwara temple, Aigandapura (b) Sculptures on the Begur Nageshwara temple pillar (c) The Sapta Matrikas from the Someshwara temple, Gattihalli.



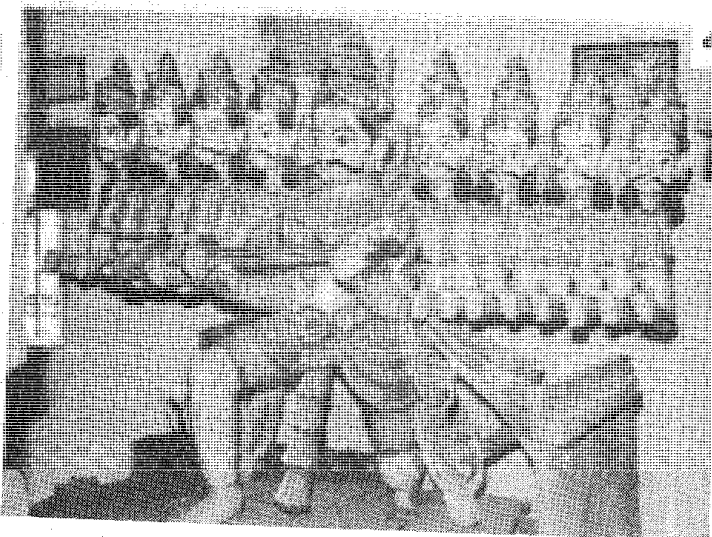
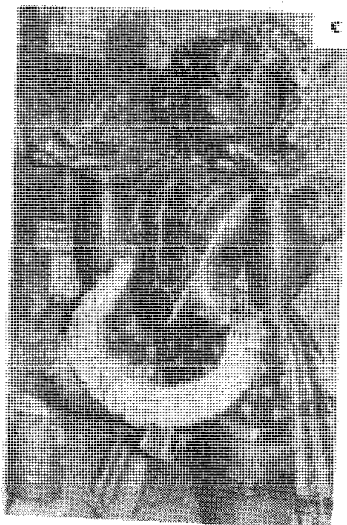
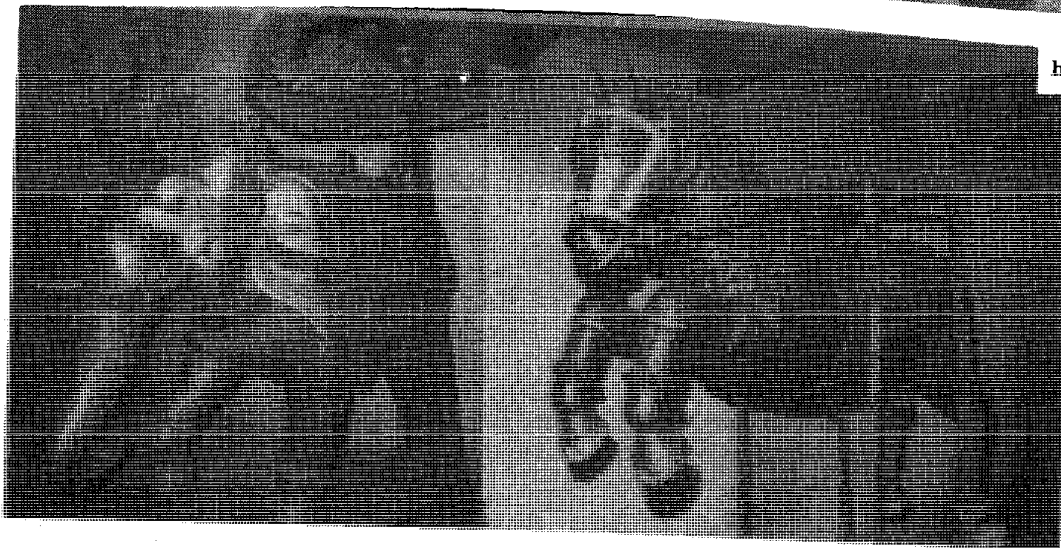
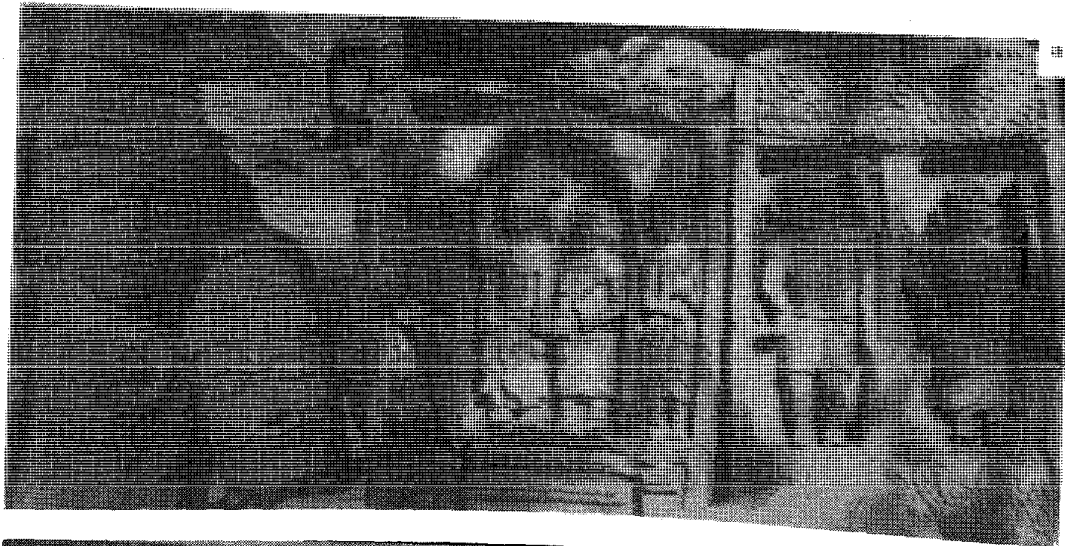
(a) Surya from Jyothipura. (b) Agni, Gavi Gangadhara temple. (c) Garuda from Begur. (d) Kempegauda (?) from the Ulsoor Someshwara.



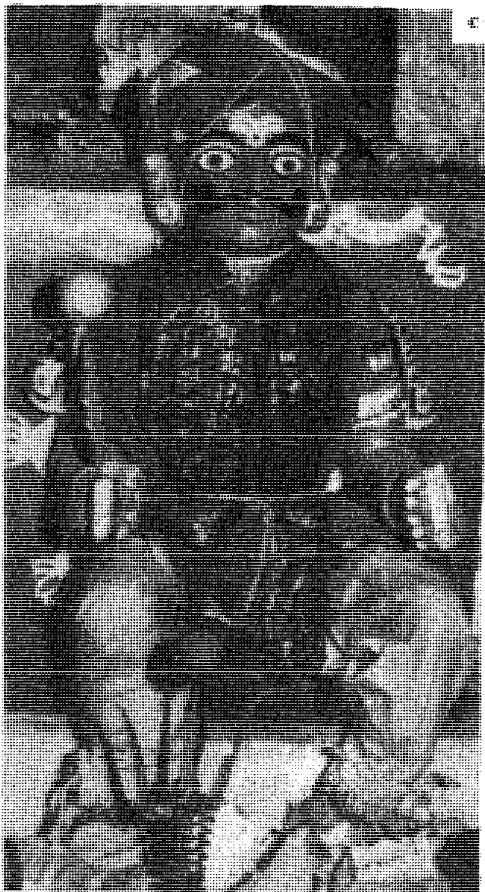
Columns from (a) Ranganatha Swamy (Bangalore), (b) Harihararaya hillock near Gavipura temple (Bangalore), and (c) and Dharmeshwara of Aigandapura. (d) Lamp pillar, the Mallikarjuna, Anekal.



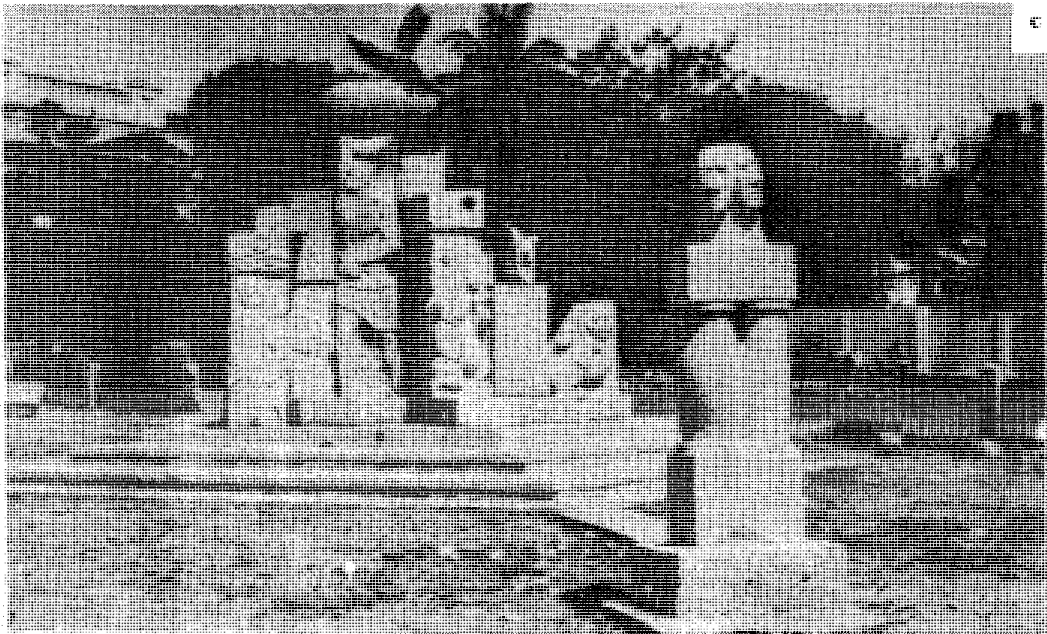
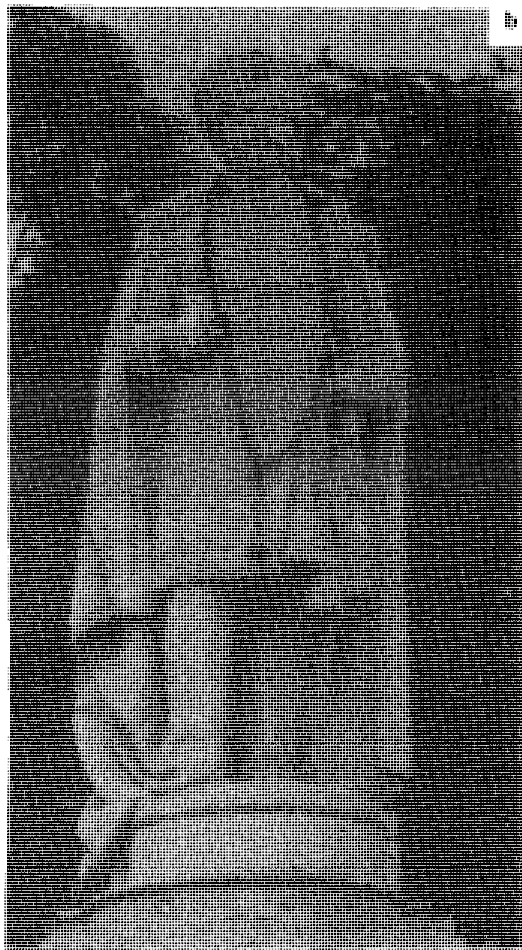
(a) Potharaja, Metallic image, the Dharmaraya Temple, Bangalore (b) Sidibeerappa, Kathriguppe, (c) The Utsava Murthis at Bangalore (d) Balarama. Stucco figure, Mayasandra.



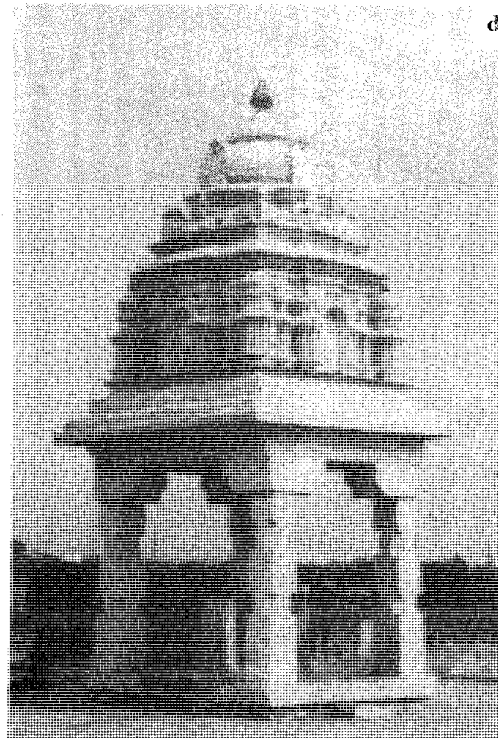
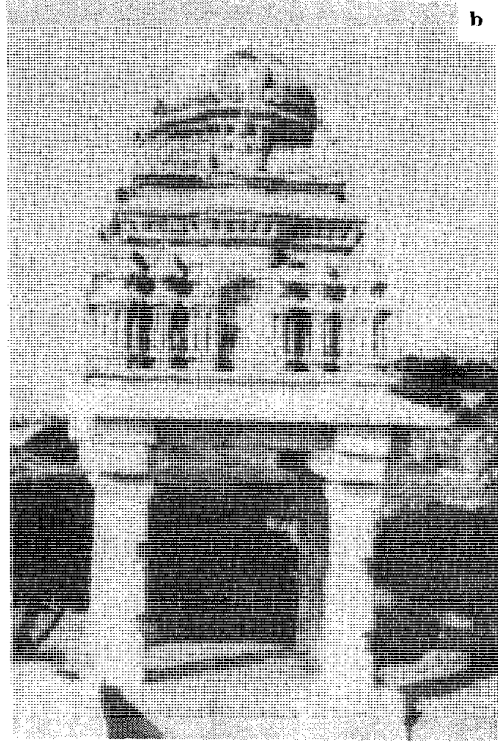
(a) Bisilu Maramma from Samandur and two relief sculptures from the Jyothi Nageshwara temple, Nagarthapeth, Bangalore. (b) Vahanas from the Muttanallur Venkataramana temple. (c) Hanuman from Bannerughatta and Ravana Vahana from the Anekal Bhavanishankara temple.



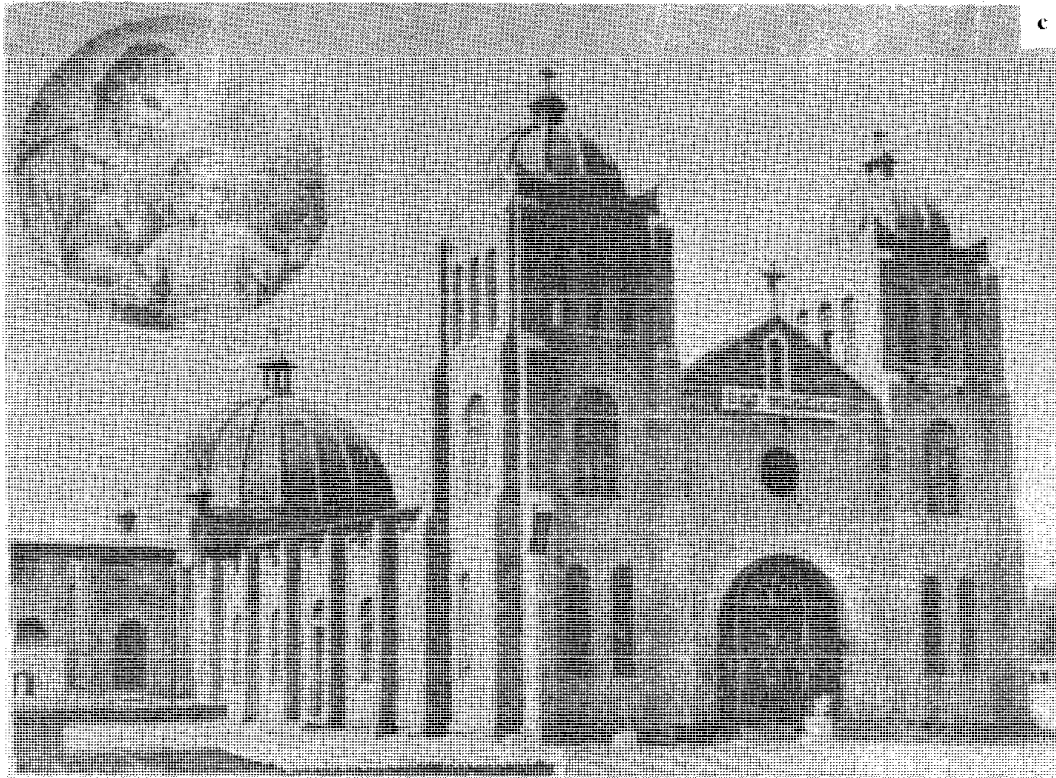
(a) Glass painting, Sarjapura (b) Sidibeerappa, the Dandina Maramma Temple, Muttanallur
(c) Sidibeerappa, Jigani.



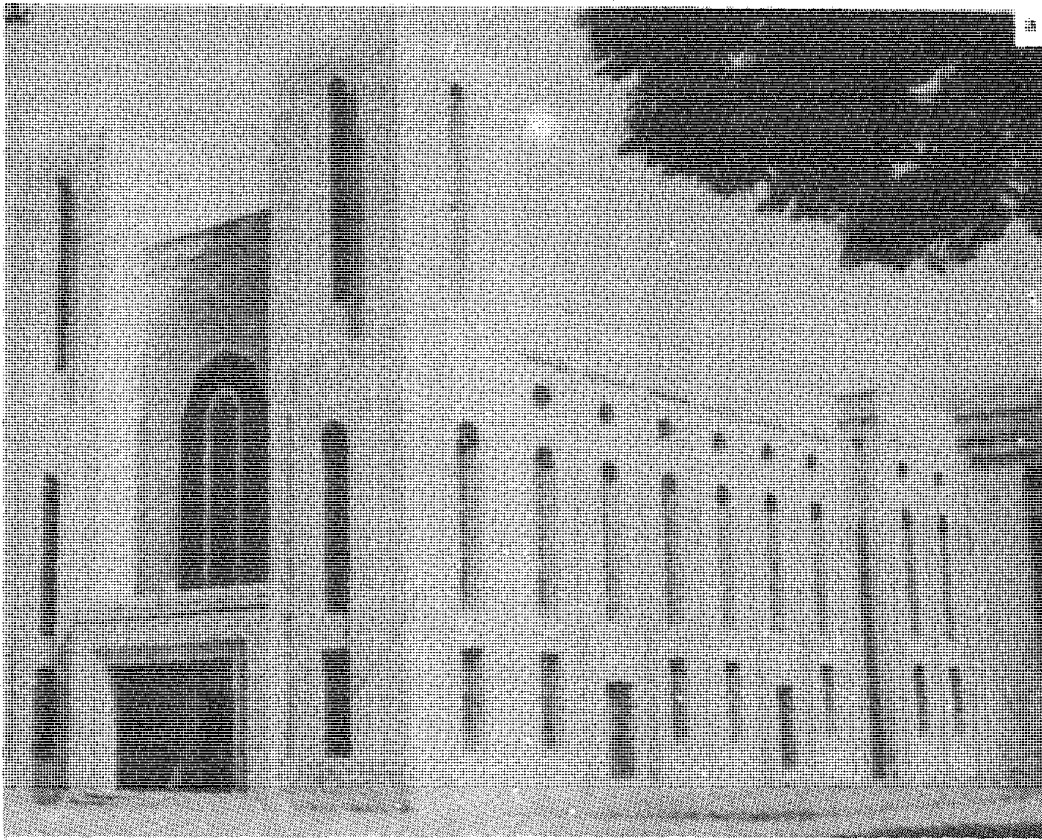
(a) Statue of Queen Victoria and (b) Chamaraja Wodeyar, Cubbon Park. (c) 'Samooha Shilpa' near the Ravindra Kalakshetra.



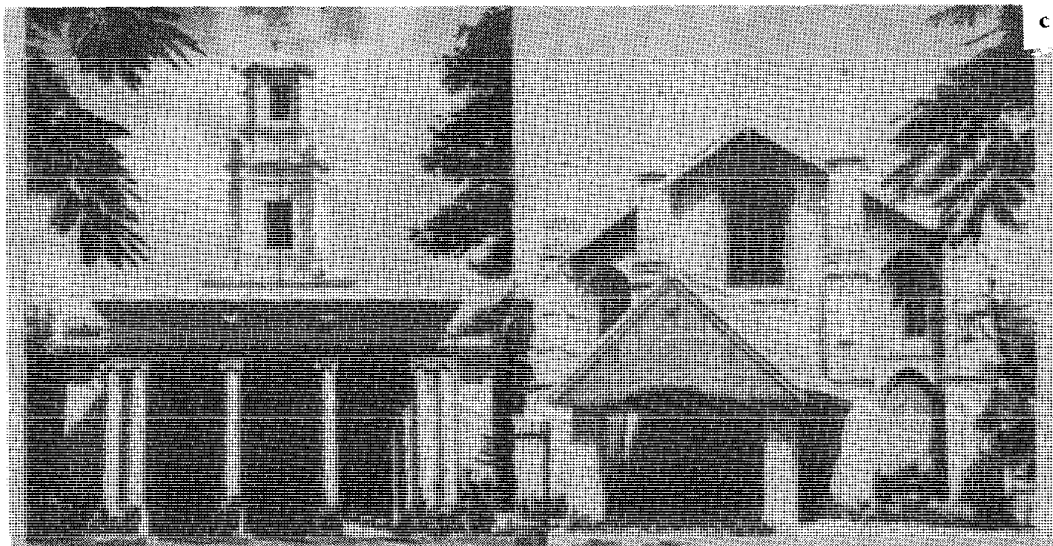
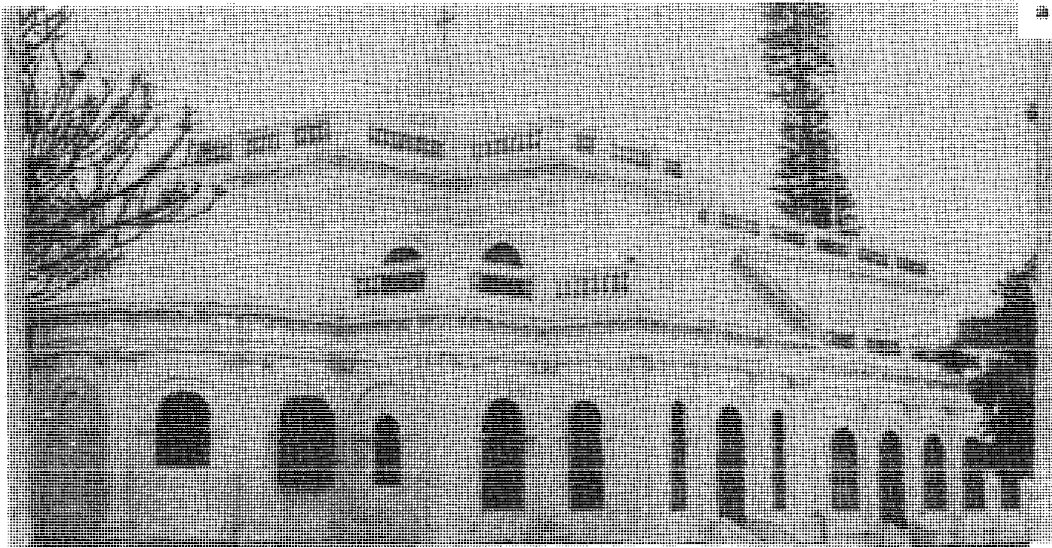
Watch towers raised by Kempegauda II around Bangalore at (a) Palace Orchard (Vyalikaval), (b) Kempegaudanagar, (c) Lalbagh, and (d) Ulsoor.



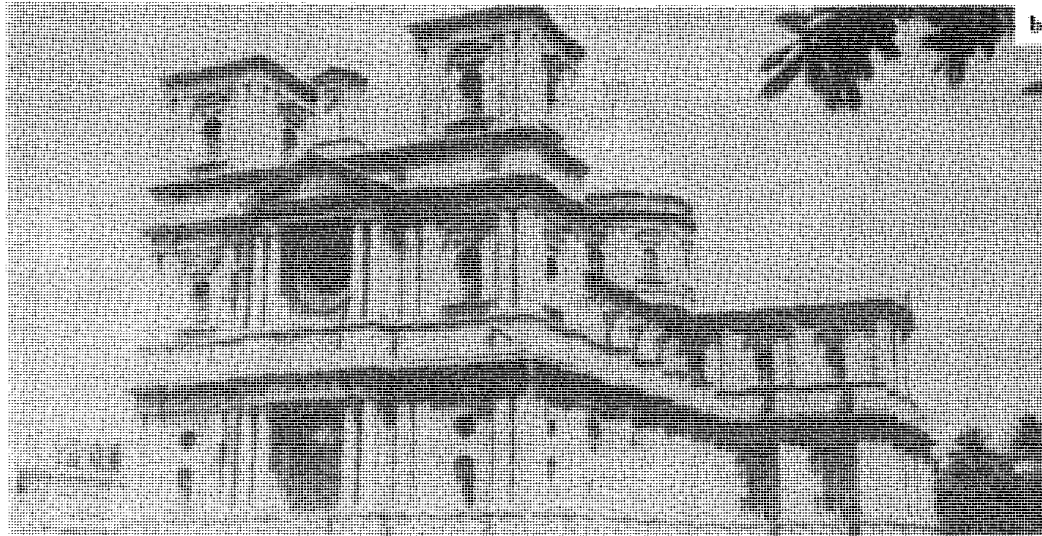
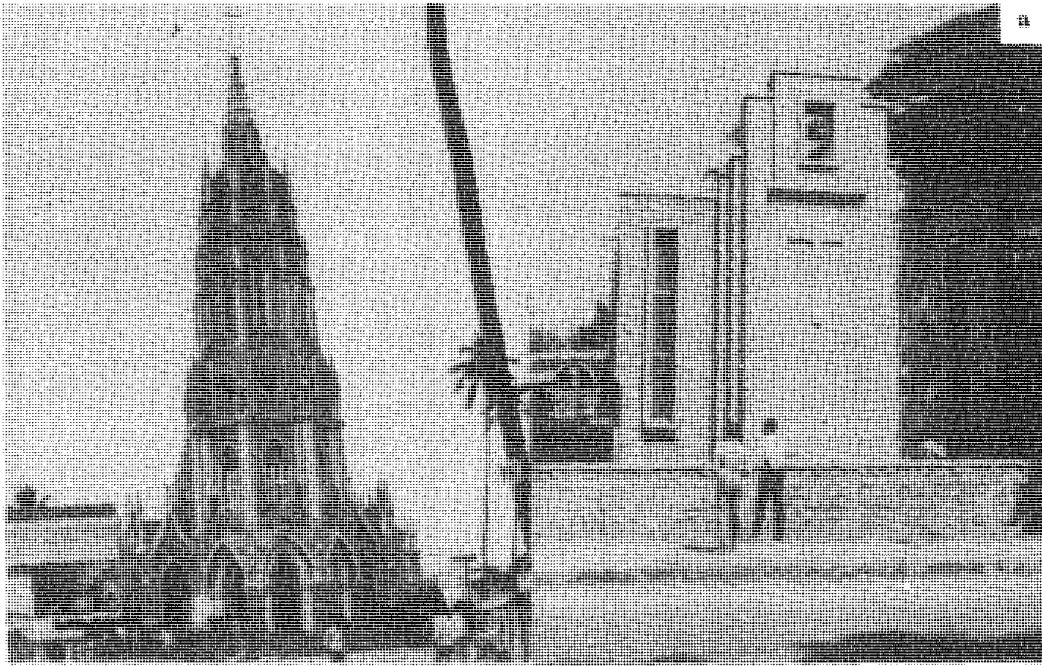
(a) The Hudson Memorial Church. (b) St. Andrew's Church. (c) St. Joseph's Church (All of Bangalore).



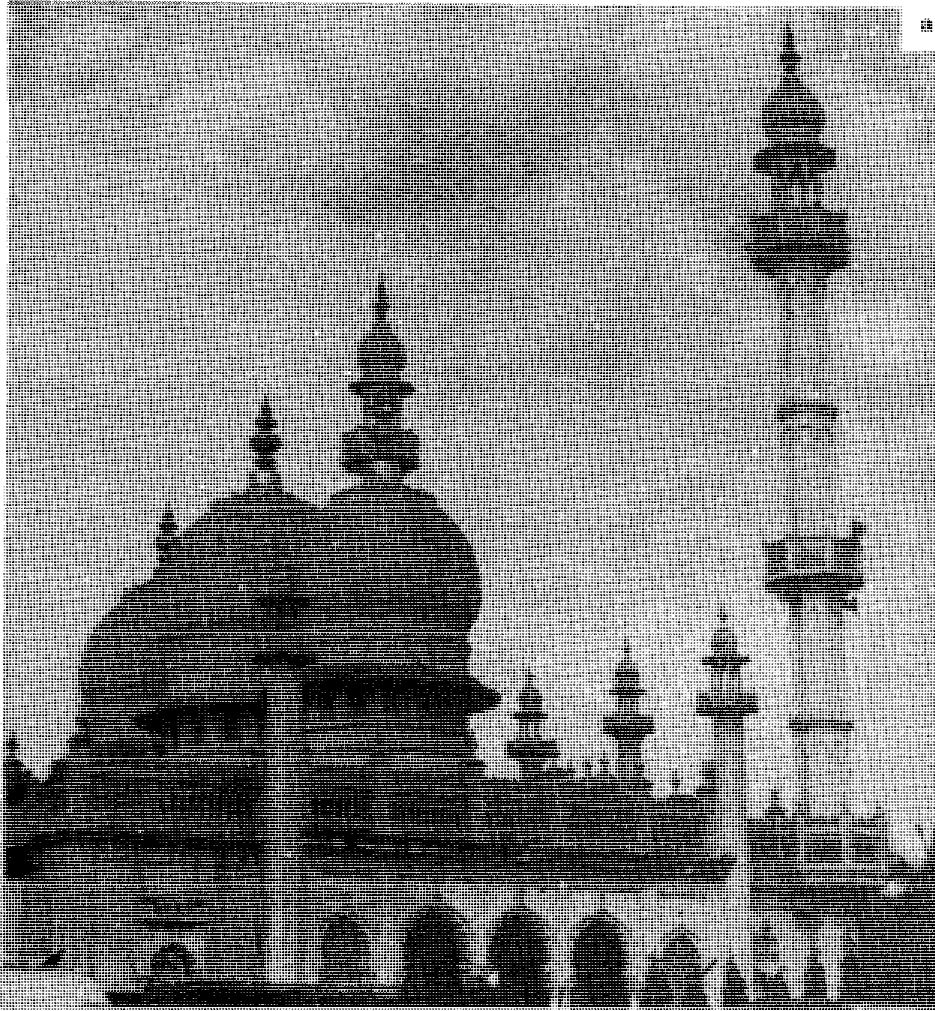
(a) The Holy Ghost Church, Bangalore, (b) Churches at Somanahalli and (c) Anekal



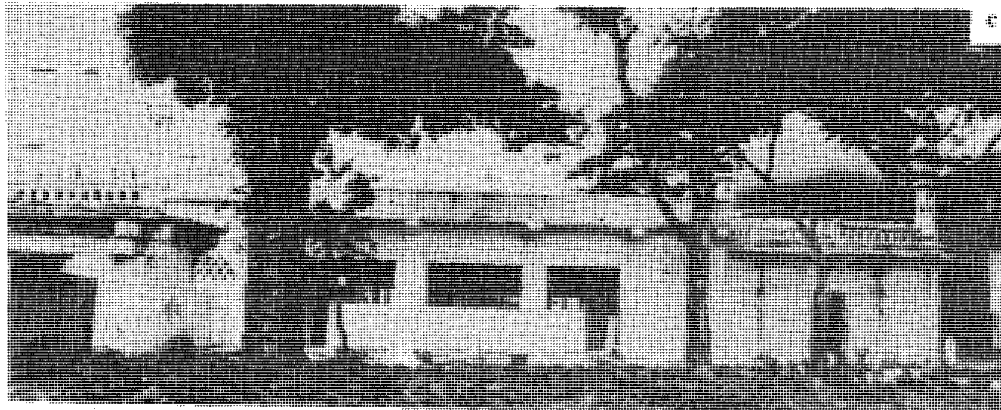
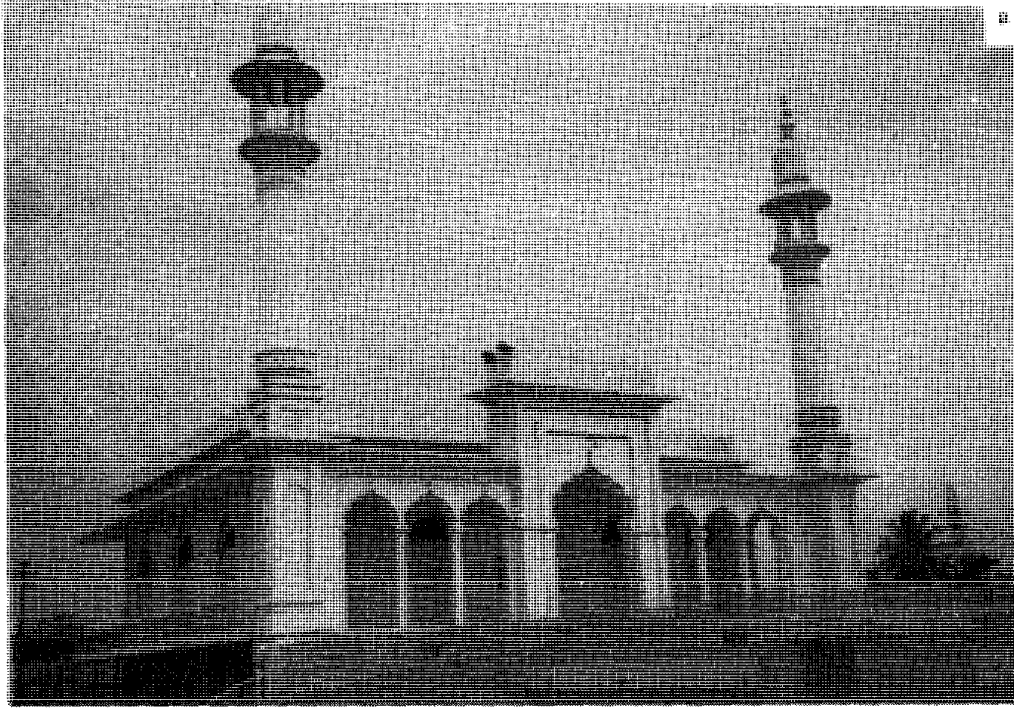
(a) St. Mark's Cathedral (b) St. Patrick's Church (c) The Holy Trinity and the Wesleyan Church, all from Bangalore.



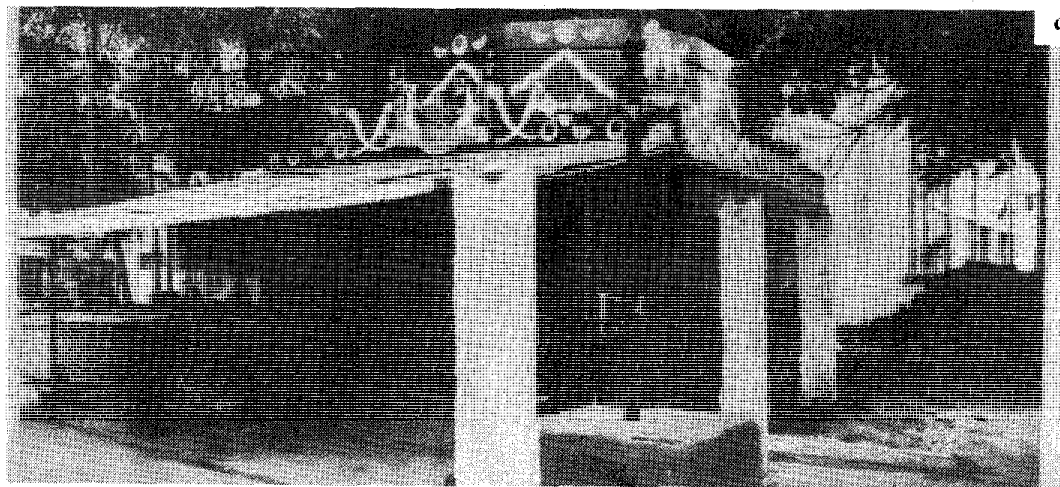
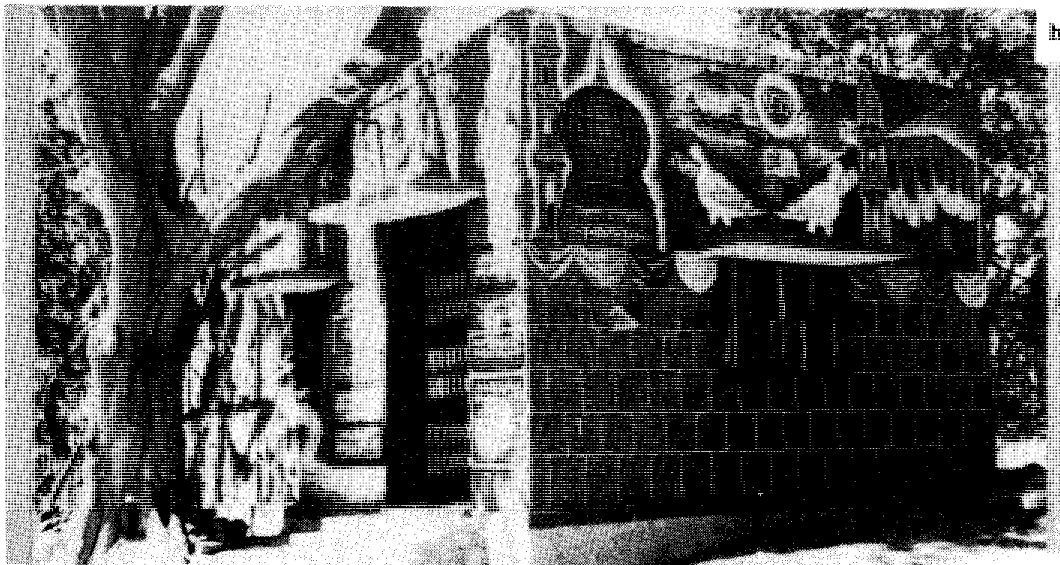
(a) St. Mary's Basilica and St. Stephen's Lutheran Church. (b) St. Francis Xavier Cathedral. (c) The Ulsoor Gurudwara. (All from Bangalore).



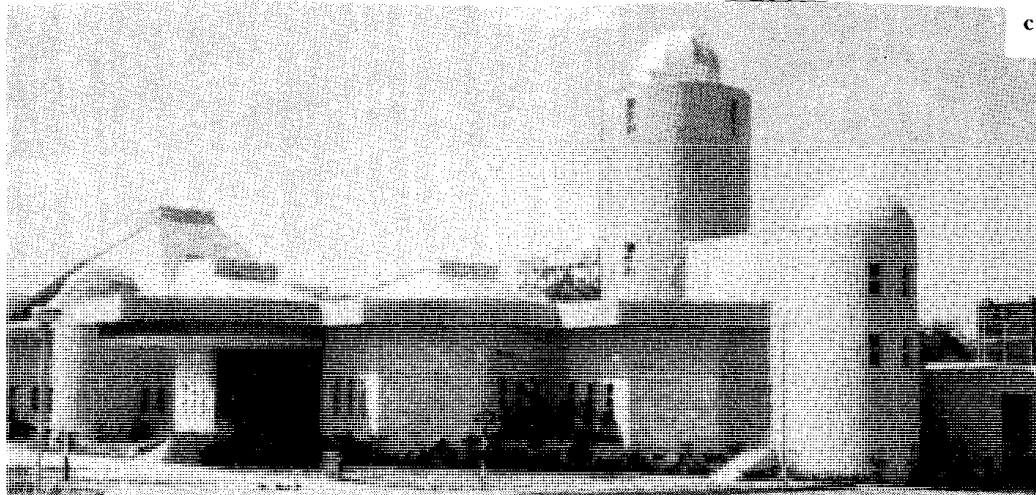
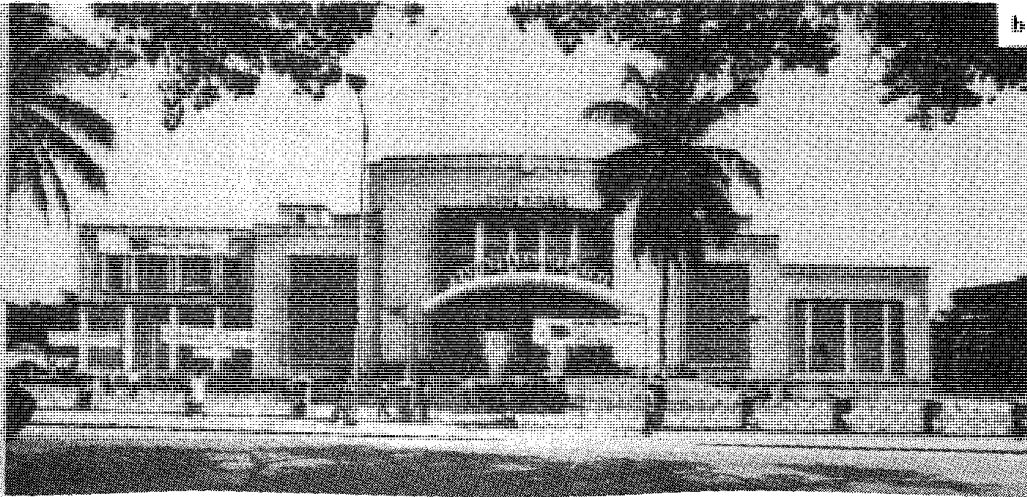
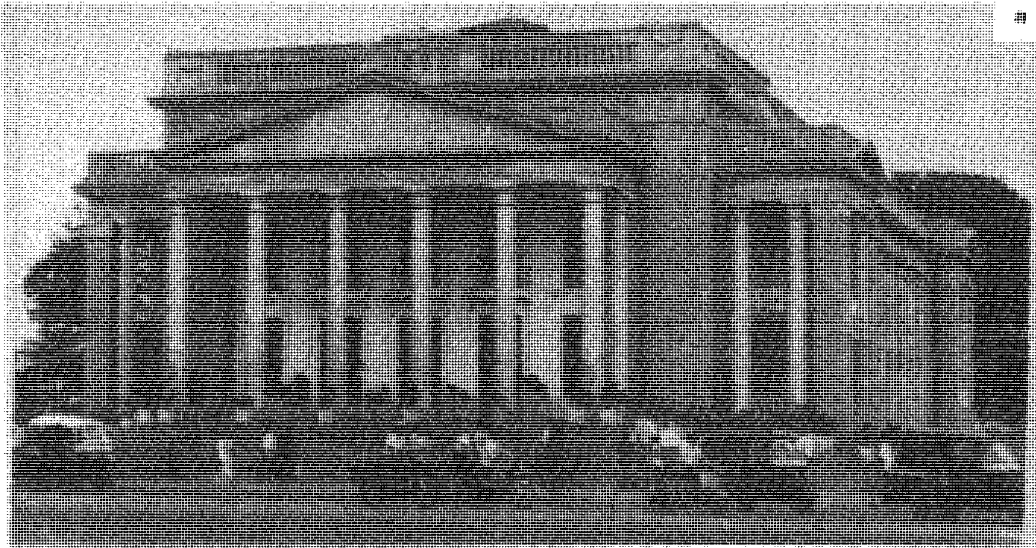
(a) Jamiya Mosque, K.R. Market. (b) Hazrath Mastansab Durgah, O.T.C. Road, Bangalore.



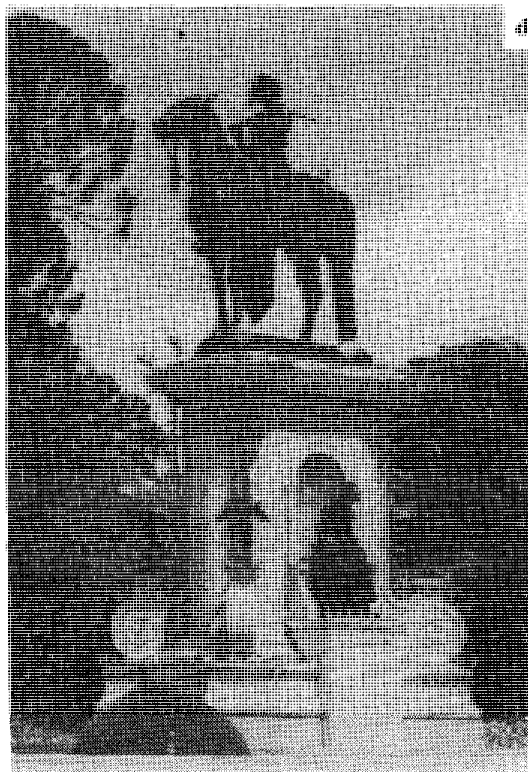
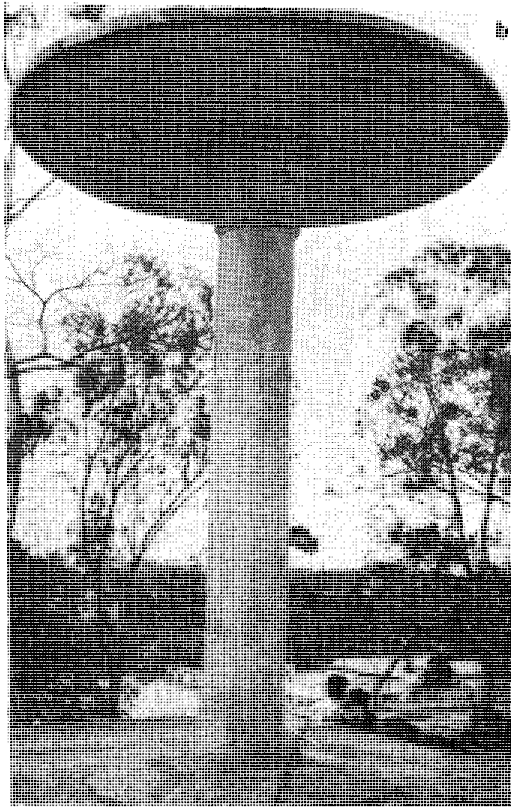
(a) Arabic College on Nagawara Road (Kadugondanahally) and the mosque attached to it.
(b) Mosque in Cubbonpeth near the dargah of Hazrath Hamid Shah.



(a) Hazrat Sayyad Ataullah Shah Khadri Shuktari Dargah, H. Siddaiah Road, Bangalore. (b) Baba Ganje Shahid Dargah, Sarjapur. (c) Hazrat Muheeb Shah Khadri Durgh, Cubbonpet, Bangalore.



(a) Sir Puttanachetty Town Hall. (b) The Raveendra Kalakshetra (theatre). (c) Jawaharlal Nehru Planetarium. (All Bangalore).



(a) Bugle Rock (b) Monolithic parasol on Hariharana Hillock (c) Cubbon's statue at Cubbon Park
(d) Chamaraja Wodeyar's statue, Lalbagh